A large, white, stylized monogram consisting of the letters 'E' and 'H' joined together. The 'E' is on the left and the 'H' is on the right, with a horizontal bar connecting them. The background is a soft, pastel-colored sky transitioning from light orange at the top to a pale purple at the horizon, with a layer of white, fluffy clouds below the horizon line.

EH

ELLINGTON HOUSE



WHILE OTHERS TRY TO BE THE BIGGEST, WE FOCUS ON BEING THE BEST



Since 2014, we have approached every project with a deep understanding of the human experience. We believe our devotion to craft and exceptional detail is what makes our developments stand out among Dubai's expanding skyline in ways that few buildings can.

We are a boutique property developer but, at heart, we are a family who designs for other families. We nurture elevated living from the ground up. Instead of following trends, we follow our instinct for what will satisfy our customers and their fundamental need to belong.

It's a philosophy we call 'Live in Design' a way of thinking that creates homes, spaces and surroundings that are in complete synergy with your life.

The result is a portfolio of modern yet welcoming communities. Diverse living spaces that capture the true essence of home for every individual. Through our developments and connected initiatives, we continue to advocate for craft and design as a catalyst for growth within the Dubai art community.

“
A
CONCEPT
THAT
FEELS
IN
THE
CLOUDS
”

Set among a community of luxury and sustainability, Ellington House breathes new life into its idyllic surroundings. The building has an innate quality of blending in and standing out simultaneously, with dreamy, light-filled multifamily apartments overlooking Dubai Hills Golf Course and out across the city.

From one of the Emirates' most prestigious locations, Ellington House offers a fresh perspective on living well and investing wisely.



ELLINGTON HOUSE

DUBAI HILLS ESTATE

Dubai Hills is best known for the immaculately kept fairways of its sprawling golf course and an elegant clubhouse that's equally impressive. But as well as becoming a haven for golfers, the sheer beauty of Dubai Hills Estate and its lush green parks is what draws so many.

The area is a vibrant and inclusive community with many unique qualities that make it ideal for families who cherish connection with nature while being within easy reach of the city. Among its leafy lanes and natural fauna, there are fitness facilities, cycle lanes, children's play areas and nature reserves to discover, as well as three international schools, a hospital and the newly-opened Dubai Hills Mall.





BELTING

ELLINGTON

ELLINGTON HOUSE



A
WELCOMING
COMMUNITY

JUST
MOMENTS
FROM
THE
CITY

DUBAI HILLS ESTATE FROM ABOVE

- 01 **Ellington House**
- 02 Dubai Hills Golf Club
- 03 Dubai Hills Golf Course
- 04 King's College Hospital
- 05 Gems International Schools
- 06 Retail & Nursery
- 07 Geant Express
- 08 Service Station
- 09 Petrol Station
- 10 Dubai Hills Mall
- 11 Dubai Hills Business Park
- 12 Dubai Hills Park
 - A. Community Dog Park
 - B. Dunescape Play Area
 - C. Sports & Exercise
 - D. Amphitheatre
 - E. Bounce Park
 - F. Wadi Oasis
 - G. Urban Beach & Splash Play
 - H. Synthetic Ice Rink
 - I. Skate Park





A LEAFY PARADISE IN A DREAM LOCATION

02^{Mins}

DUBAI HILLS
GOLF CLUB

02^{Mins}

KING'S COLLEGE
HOSPITAL

02^{Mins}

GEMS INTERNATIONAL
SCHOOL

06^{Mins}

DUBAI HILLS
MALL

12^{Mins}

MALL OF THE
EMIRATES

12^{Mins}

DUBAI MARINA

12^{Mins}

MEYDAN
RACECOURSE

15^{Mins}

DUBAI MALL
& BURJ KHALIFA

15^{Mins}

BURJ ALARAB

17^{Mins}

AIN DUBAI

17^{Mins}

MUSEUM
OF THE
FUTURE

20^{Mins}

DUBAI
INTERNATIONAL
FINANCIAL CENTRE

21^{Mins}

DUBAI
INTERNATIONAL
AIRPORT

25^{Mins}

PALM
JUMEIRAH

30^{Mins}

DUBAI
WORLD CENTRAL
AIRPORT

FOR THOSE WHO DREAM OF ELEVATED LIVING

Ellington House reaches for the pinnacle of comfort, style and serenity that culminates from beauty by design. With minimalist cues throughout its interiors, the building demonstrates a masterful command of natural light and allows unhindered views from its spacious balconies.

Modern yet soft, natural yet accessible, the development is an experience of truly elevated living in both the physical and the emotional sense.



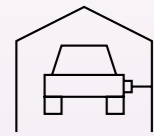


C L E A N M O D E R N L I N E S

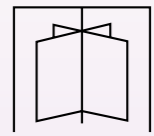


L U S H G R E E N S P A C E S

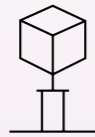
A U N I F I C A T I O N O F



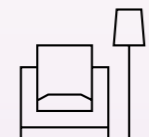
EV CHARGING
STATIONS



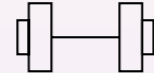
LOBBY
& LOUNGE



ART
INSTALLATIONS



CLUBHOUSE



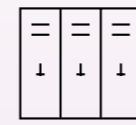
FITNESS
CENTRE



BICYCLE
PARKING



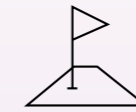
BIKE MAINTENANCE
& WASH



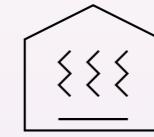
GOLF
LOCKERS



YOGA
ROOM



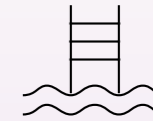
MINI
PUTT



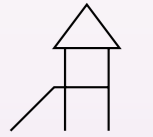
STEAM ROOM
& SAUNA



ACTIVITY
GARDEN



LEISURE &
LOUNGE POOL



CHILDREN'S
PLAY AREA

M O D E R N I T Y , W E L L B E I N G A N D P R A G M A T I S M

I N T R O D U C I N G

EH

E L L I N G T O N H O U S E



L O B B Y &

L O U N G E

Merging a hotel concierge, a communal workspace and a welcoming lounge area, the grand vestibule to Ellington House is a fully-connected hub that looks out across the gardens through floor-to-ceiling windows. Split across a ground floor and a mezzanine, the space offers coffee and refreshments, bookshelves filled with inspiring reads, modern workstations and areas for socialising.

This is a place designed to grow and adapt to the needs of its residents, as well as somewhere to dwell and take in the beauty of its surroundings.

G R O W



B E L O N G





H

O

M

E

C

L

U

B

H

O

U

S

E





D E S I G N E D T O

The Clubhouse offers a break from technology with quiet spots to read as well as indoor and outdoor spaces for more sociable activities such as a games table and a gaming zone. It is the perfect venue to unwind and reconnect with those close to you.

R E C H A R G E

K I D S ' C L U B H O U S E

Children at Ellington House will discover theatrical, nature-inspired play areas that delight their imaginations. The space features a child-size bathroom, a multi-tier climbing structure made from eco-friendly wood, as well as award-winning internationally recognised toys, play structures and books. Using scale, and tactile elements, it is an energetic hub of learning, socialising and creating all-important early memories.





F I T N E S S C E N T R E

Enlisting the knowledge of leading fitness experts and trainers, we have created a vibrant space connected to the outdoors to instill energy and motivation. As well as dedicated zones for yoga and stretching, there are indoor and outdoor fitness areas featuring acoustic flooring and high-performance eco-conscious equipment for full-body workouts.





U N W I N D



P O O L D E C K

The Pool Deck is perhaps the most beautiful hidden secret of Ellington House, boasting an illuminated infinity lap pool, Baja shelf, in-built seating, jettied pool, a children's pool and an elevated spa. Looking out across Dubai Hills Golf Course, it is a unique venue for celebrations and entertaining guests, or to simply unwind as the sun sets behind the city skyline.

CHANGE ROOMS

To help you rejuvenate after your swim, the change rooms include steam showers, Chromotherapy lights as well as traditional wood saunas.

R E L A X



& R E J U V E N A T E



TRANQUILITY

ACTIVITY

The Activity Garden of Ellington House is a quiet outdoor area that offers protection from the sun. It features thoughtfully designed cooking and dining areas for BBQs, as well as relaxed activities for all ages including mini-putt, a children's outdoor play area and dedicated space for outdoor yoga.

GARDEN

P A R K I N G
S P A C E S ,
C Y C L E
S T O R A G E
&
T R A N S P O R T
L I N K S

In addition to the hotel-style entrance to the lobby, there is a car park with e-vehicle charging stations and dedicated cycle parking areas for eco-conscious residents. Golf enthusiasts will also benefit from dedicated lockers and washing stations for their sports equipment.

As part of Dubai's 2040 vision to encourage healthy, sustainable transport, Ellington House is connected with the city and local amenities via pedestrian walkways, cycle lanes and, a bus stop.

C O N N E C T E D



& C O N V E N I E N T

K I T C H E N S



THE
HEART
OF
THE
HOME

For many, the kitchen is considered the heart of the home. A place for entertaining, cooking and spending time together each day, our kitchens are crafted with meticulous detail and feature high-quality fittings, including a fridge and freezer, oven and gas cooktop.



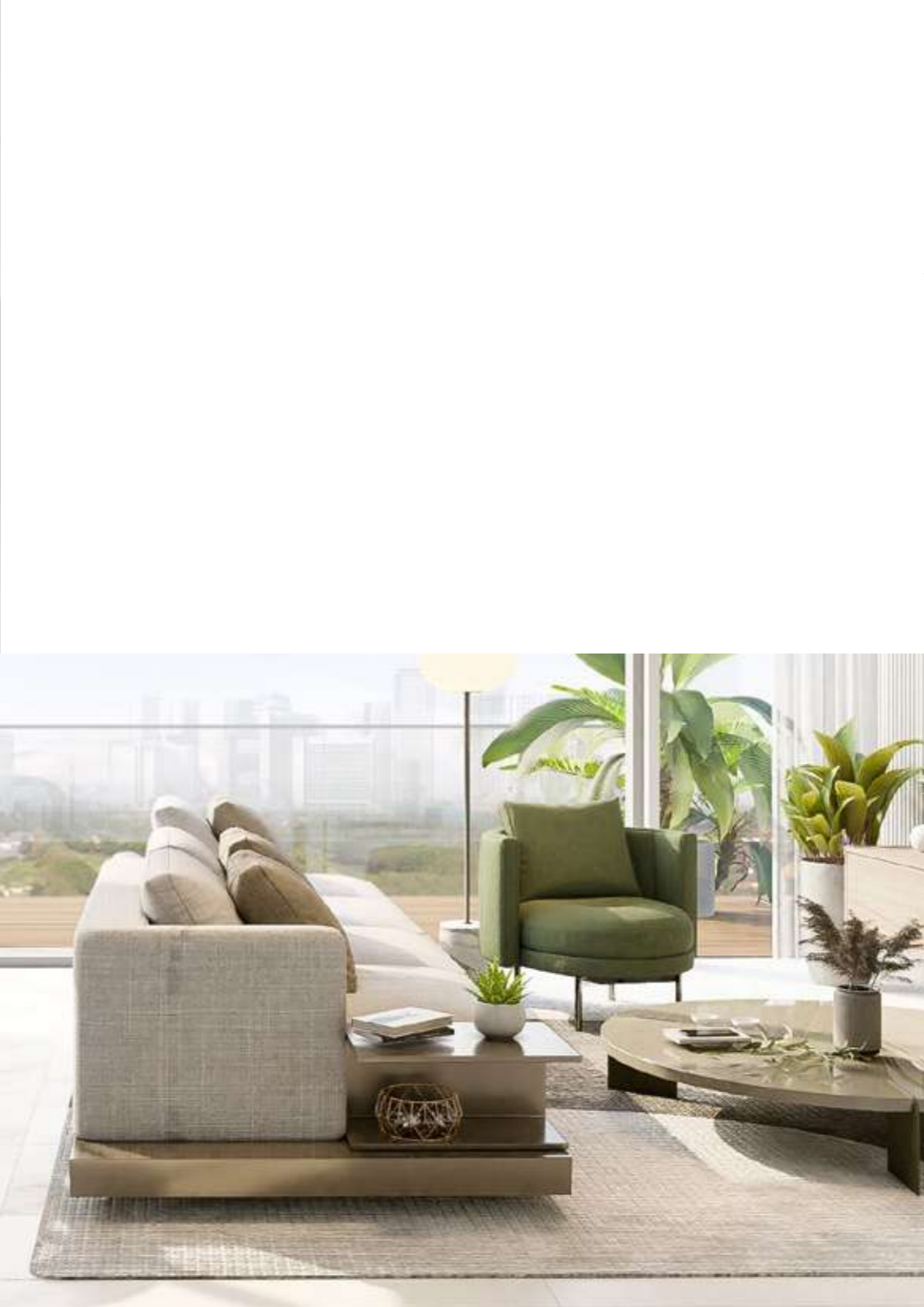


CRAFTED WITH
METICULOUS DETAIL

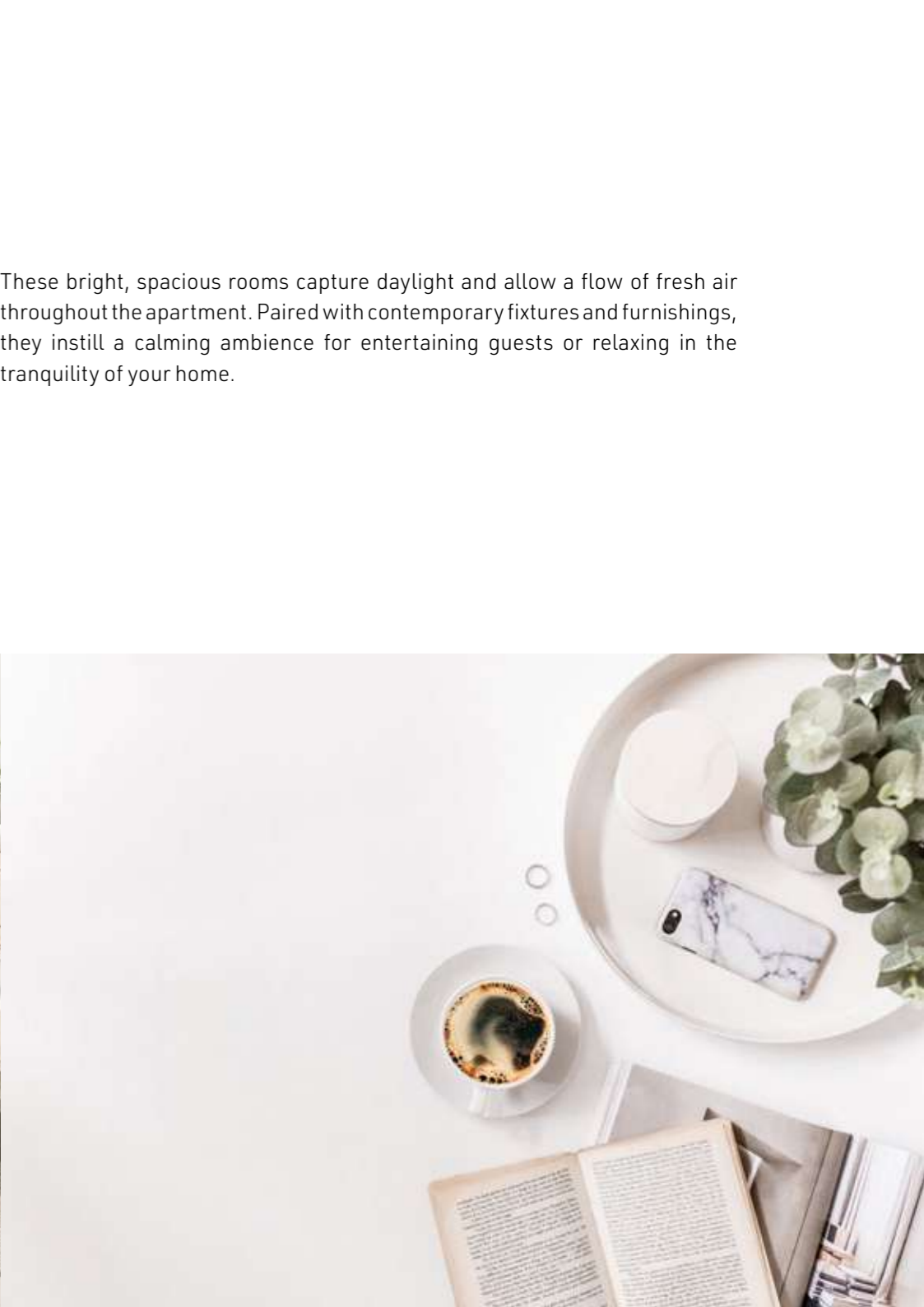


LIVING ROOMS & DINING ROOMS





These bright, spacious rooms capture daylight and allow a flow of fresh air throughout the apartment. Paired with contemporary fixtures and furnishings, they instill a calming ambience for entertaining guests or relaxing in the tranquility of your home.



B

E

D

R

O

O

M

S



R E - E N E R G I S E D

Begin every day truly re-energised, as natural light floods through large open windows and creates gentle reflections on bright contemporary detailing. A staple for any stylish resident, the wardrobe includes intelligent design features such as high-quality soft-close drawers and luxurious full-height integrated mirrors.



A S T A P L E F O R A N Y



S T Y L I S H R E S I D E N T



B

A

T

H

R

O

O

M

S



BATHROOMS &

POWDER ROOMS

Simplicity, elegance and quality are the key ingredients to our beautifully minimalist bathrooms. The layouts are carefully considered to maximise space and light, while thoughtful touches for storage and cleanliness imbue a feeling of self-care. Our immaculate powder rooms offer a sense of calm while seamlessly integrating water-saving fixtures with high-quality detailing.





L I V I N G I S M O R E M E A N I N G F U L

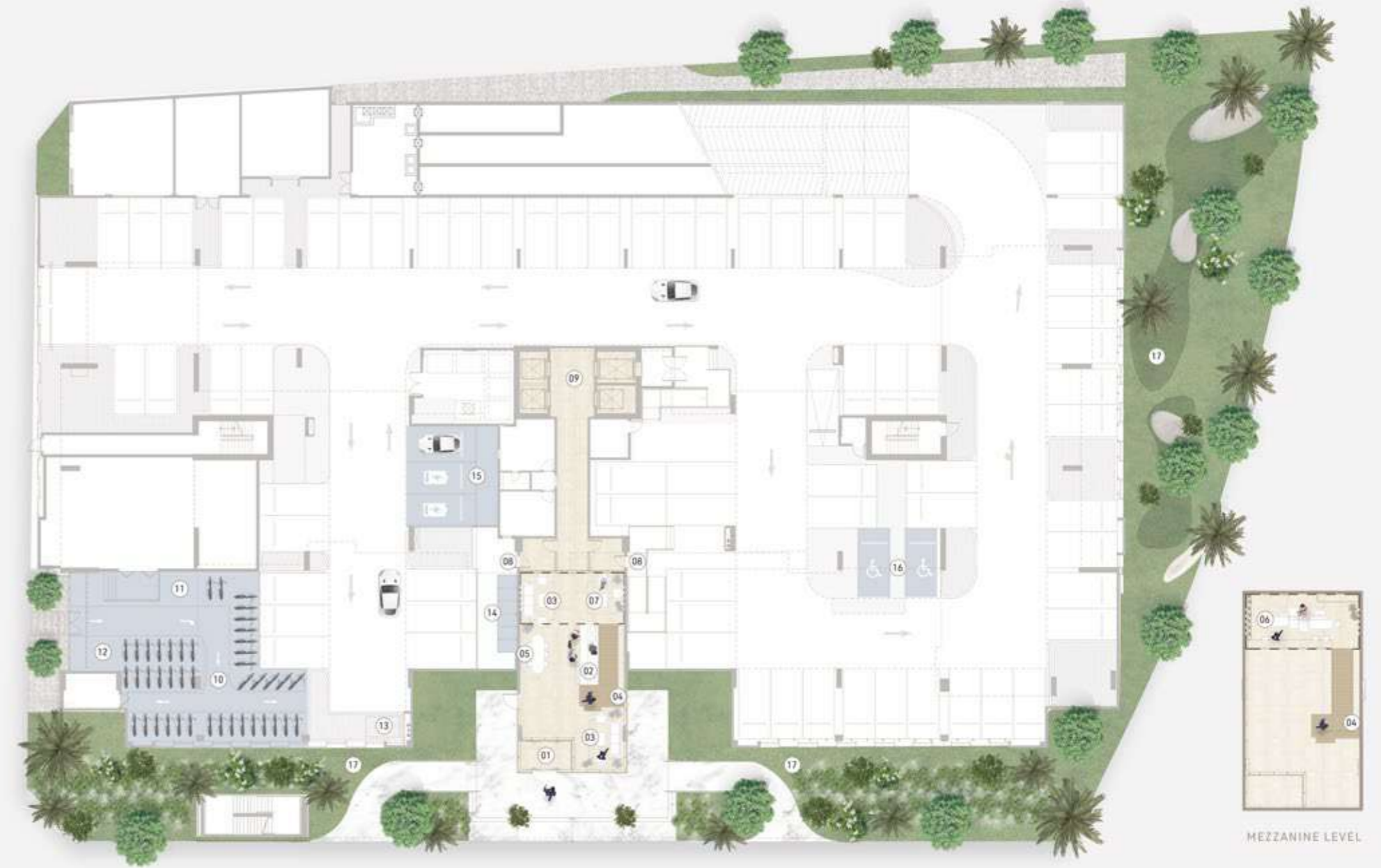
Ellington House demonstrates its contribution to the shared experience of living with communal spaces and thoughtful detailing throughout the building.

Arriving through the double-storey entrance lobby, with its bright open mezzanine, or when wandering through elegant backdrops and flourishing gardens, there are BBQ areas for entertaining guests and intimate moments to savour among nature, including yoga, children's play areas and shaded seating.

A S A S H A R E D E X P E R I E N C E

GROUND FLOOR AMENITIES

- | | | | |
|----|---|----|-------------------------------------|
| 01 | Lobby Entrance | 09 | Lift Lobby |
| 02 | Lobby Reception | 10 | Bicycle Parking |
| 03 | Lobby Lounge Area | 11 | Bicycle Maintenance Area |
| 04 | Mezzanine With Feature Staircase & Wall Library | 12 | Dog Wash Area |
| 05 | Lower Level Lobby Workstation | 13 | Golf Wash Area |
| 06 | Upper Level Lobby Workstation | 14 | Golf Lockers |
| 07 | Coffee Station | 15 | EV Charging Stations |
| 08 | Access To Residents Parking | 16 | Parking For People Of Determination |
| | | 17 | Landscaped Areas |



MEZZANINE LEVEL

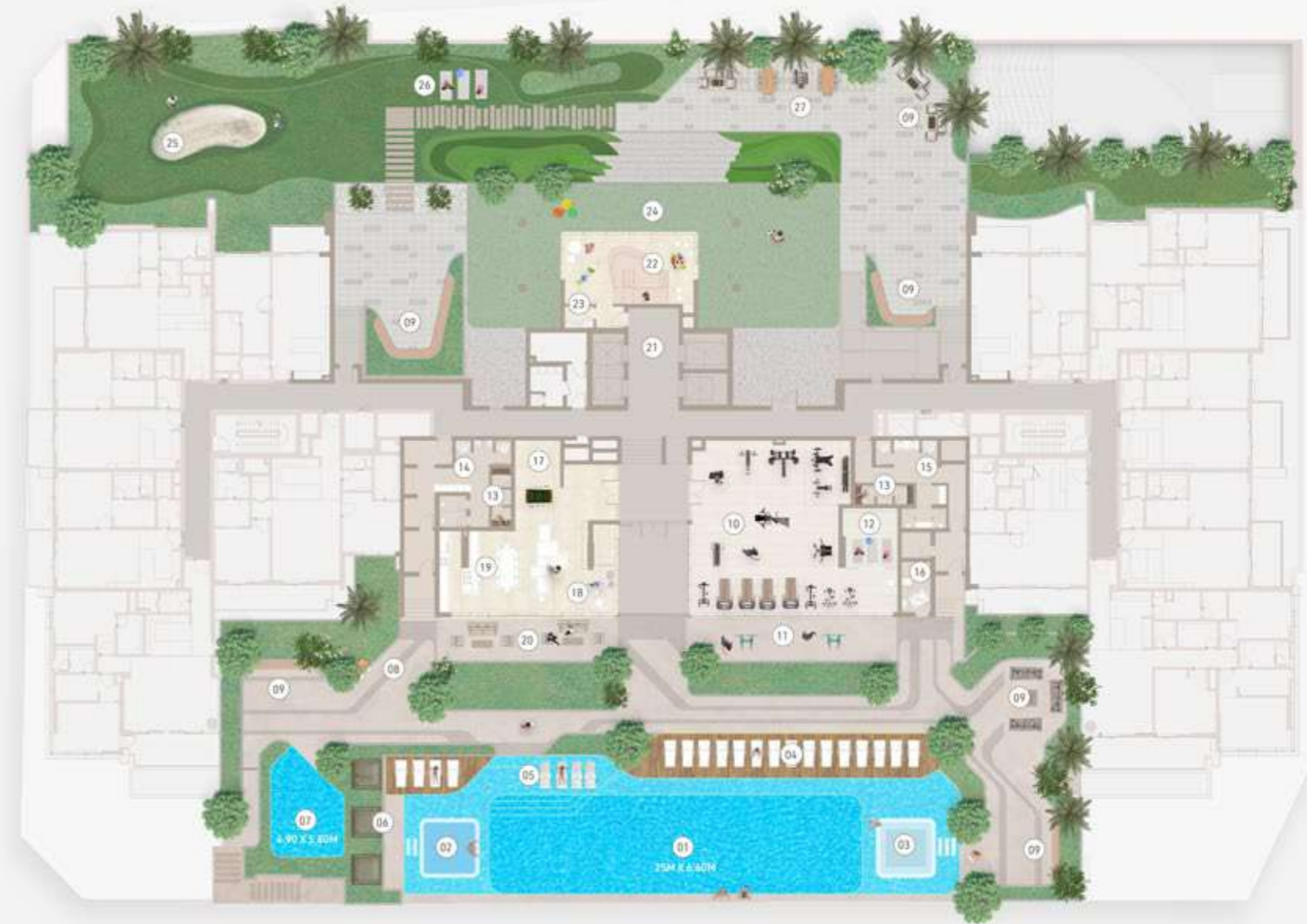


Scan to view
the interactive
amenities plan



FIRST FLOOR AMENITIES

01	Leisure & Lap Pool	16	Family & People Of Determination Change Room
02	Pool Spa	17	Clubhouse Games Zone
03	Sunken Seating	18	Clubhouse Lounge & Library Area
04	Pool Sun Loungers Area	19	Dining & Kitchen Area
05	Baja Shelf	20	Clubhouse Outdoor Seating Area
06	Cabanas	21	Lift Lobby
07	Kids' Pool	22	Kids' Clubhouse
08	Outdoor Shower Area	23	Kids' Toilet With Baby Change
09	Outdoor Seating Areas	24	Outdoor Kids' Play Area
10	Indoor Fitness Studio	25	Mini Putt
11	Outdoor Fitness Area	26	Outdoor Yoga Area
12	Yoga Room	27	Barbeque Area
13	Steam Shower & Sauna Rooms		
14	Male Changing Room		
15	Female Changing Room		



Scan to view
the interactive
amenities plan



A close-up photograph of several large, green, heart-shaped leaves with prominent veins. The leaves are covered with numerous small, clear water droplets, suggesting a recent rain or dew. The lighting is soft, highlighting the texture of the leaves and the glistening surface of the water.

S U S T A I N A B I L I T Y



A R T F O U N D A T I O N

Ellington Art Foundation aims to nurture the UAE's emerging talent across painting, photography, sculpture, installation and mixed media. Through workshops and competitions, we use our position as a leading design-led developer to help raise the profile of regional artists by showcasing their work in our buildings. In our latest project, Ellington House will continue this path and will display new art installation throughout the building.





DT1 is a trendsetter for the new market standard, incorporating art and amenities in the heart of Dubai. The project reflects the unique and luxurious expression of residences, wrapped in an understated yet elegant facade, and offering a truly distinct setting inside out.

WILTON
— TERRACES —

Wilton Terraces creates an atmosphere where young families can connect, share and grow. The project includes a fitness centre and yoga room, a children's pool and a family pool with a full lap, indoor and outdoor children's play areas, and BBQ areas.



The project is designed for balanced lifestyles, where the apartments and residences flow uninterrupted into outdoor spaces and parks, seamlessly extending the interiors. It features a London-inspired aesthetic and an infinity edge swimming pool overlooking the park.



Kensington Waters serves as the perfect backdrop to lead a contented, modern, and fulfilling life. The development's design and architecture offer residents a unique space where they can experience life in full, grow, expand and thrive. Heightened ceilings, generous outdoor areas, generous storage spaces and wide windows provide room to energise, refresh and reboot, increasing productivity and encouraging self-initiative and an active lifestyle.



Berkeley Place is Ellington Properties' latest design-led project that raises the bar in exceptional living. The residence features a slew of wellness and entertainment amenities that add to its exclusivity. Berkeley Place stands out for its distinct geometries as it soars against Dubai's dazzling city views. The elegant building features an eye-catching façade that's punctuated by balconies with their Ellington signature tall metal and glass balustrades. The rooftop captures the exclusivity of the residence with a slew of amenities including an infinity pool, a lavish lounge with viewing deck.

Harrington
HOUSE

Harrington House exemplifies a comprehensive and balanced approach to urban living, inspired by the breathtaking Arabian Desert and its natural richness, via a plethora of interwoven features that cater to a happy and healthy existence. It is a development that embodies wellbeing, pleasure, and health thanks to neutral tones and a warm color palette.

BELGRAVIA

Belgravia is a building enveloped by a new 'Residential Rhythm', using precisely balanced proportions and bespoke details in its design. The project includes 181 units, ranging from 1 - to 3-bedroom apartments. Home to a resort-style swimming pool, gym, elegant lobbies, and kids' indoor and outdoor playing areas, along with an expansive courtyard and elegant landscaping, Belgravia provides well-equipped amenities for all its residents.

BELGRAVIA II

Belgravia II offers its residents a quality of life with a colour scheme that is intentionally neutral, with a calm but strong monochromatic and contemporary palette, accentuated by Armani Grey marble inside and out. The project includes two elegant lobbies decked with signature art pieces made by local artists and commissioned by the Ellington Art Foundation.

BELGRAVIA III

Belgravia III comes with a fresh, cool palette with penny-round tiles, white joinery and light wood accents. The project is home to our largest courtyard yet, alongside two spacious, double-heighted lobbies. As a uniquely designed community, it offers 260 modern studios, 1 and 2-bedroom apartments, and townhouses, with a host of excellent amenities.

BELGRAVIA HEIGHTS I

With a Scandinavian design approach, a timeless grey palette and beautiful accents of white and warm beige tones, the look and feel of this development invites minimalism, simplicity and functionality, creating a more holistic living experience for our residents.



An icon of contemporary architecture designed for optimum community living, Belgravia Square encompasses 225 beautifully crafted studios, 1 and 2-bedroom apartments. With amenities such as two double-heighted lobbies, dramatic staircases and bespoke art installations, it's the perfect home to lead a fulfilling life.

THE SLOANE
by BELGRAVIA HEIGHTS

The Sloane by Belgravia Heights is a Miami-inspired residential tower that echoes coastal vibes and a beachside lifestyle. The project encompasses an active and dramatic indoor and outdoor fitness centre, an outdoor cinema, an outdoor BBQ, kitchen and picnic areas, a lounge and lap pool, a dramatic and bright lobby, and a rooftop pet park.

A W A R D S

ARABIAN PROPERTY AWARDS

2017

Best Residential High-Rise Architecture
– DT1
Best Architecture Single Residence
– The Ellington Collection at
The Palm Island

INTERNATIONAL PROPERTY AWARDS

2018

Innovative Company of the Year
Best Luxury Project
– DT1

ARABIAN BUSINESS AWARDS

2019

Best Interior Design Show Home
– Belgravia Heights 1
Best Bathroom Design
– DT1
Best Regional Residential Property
– Emirates Hills
Best Global Residential Property
– Emirates Hills
Best Office Interior
– Ellington Office

CUSTOMER HAPPINESS SUMMIT & AWARDS

2019

Customer Happiness Award
– Real Estate Developer of The Year

BUILD MAGAZINE

2019

Best Boutique Property
Development Company
Middle East
Award for Excellence in Design-
Led Solutions 2019

INTERNATIONAL PROPERTY AWARDS

2020

Best Residential Development
– Wilton Park Residences
Best Bathroom Design
– Wilton Park Residences
Award-winner in Development Marketing
– Live In Design Campaign
Award-winner for Residential Interior
– Apartment – Eaton Place
Award-winner for Residential Interior
– Show Home – Belgravia Square

LUX LIFE MAGAZINE AWARD 2021

2021

Best Luxury Real Estate Developer
in Dubai

INTERNATIONAL PROPERTY AWARDS

2021

Best Residential Interior - Showhome
– Wilton Park Residences
Award Winner in Residential Development
– DT1
Award Winner in Bathroom Design
– Wilton Terraces
Award Winner in Kitchen Design
– Wilton Park Residences

