

JUST PERFECT

Interior design by

justcavalli

*“Today
the world
is a colourful
jungle”*

In the world of the wild and curious, nothing is mere coincidence and no detail is too small. This mysterious world is full of prodigies, alpha males and females leading the pack with their disruptive trends and superior styles. This is an ode to everything they stand for.



*“What is
too much?
There is no
such thing!”*

Just Cavalli

In 2000, Roberto Cavalli created a new line representing free spirits called Just Cavalli. Symbolising strong personalities through the use of modern materials and experimental graphics, the line has stood out as a means to express the style of tomorrow, constantly being reinvented and interpreted in an original way.



*“Nature is my
main source of
inspiration”*

Just exotic

Only a handful of men could teach the world something about challenging the ordinary. Just Cavalli's experimental nature captured the relentless desire to create some of the world's most exotic and innovative designs.

Daring prêt-à-porter creations, bold printing techniques and the glam and rock attitude paved the way for a brand that's second to none.

*“Leopard is
an animal design,
and my designs
come from
nature”*

Just home

A design pundit is not bound by any medium. Just Cavalli extended his vision beyond patterns, garments and the sensational catwalks to the alluring world of home décor. He wanted to apply his unorthodox style to furniture and home interiors. From wild wallpapers to exquisite coffee tables, the home collection introduced a new era in interior design.



Just for a grand entrance

Begin your journey at an acclaimed master development with a striking, private entranceway specially designed for the stylish homes by Just Cavalli. Pass through the gateway into the exclusive community and be instantly transported into an exotic, colourful world shaped for those who love to defy the ordinary.





Just for you

Introducing luxury villas with interiors by Just Cavalli at AKOYA Oxygen – a collection of masterpieces set in an incredible international golf community.

These fashionable homes represent the brand's daring approach to design, creating unique and iconic spaces for you and your loved ones. The earthy patterns used indoors invite in the lush green outdoors, sending you to the heart of nature in a seamless and effortless manner.



Disclaimer: all specifications, pictures, diagrams, layouts, photographs and other graphic material used are for illustrative purposes only. Layouts and Individual features, specifications and items may vary or be substituted for replacement layouts, features, specifications or items of equivalent standard and style. The above material is correct at the time of print but may be subject to change as necessary and without notice. Specifications and graphic materials are not intended to form part of any contract or warranty unless specifically incorporated in writing into the contract.



Disclaimer: all specifications, pictures, diagrams, layouts, photographs and other graphic material used are for illustrative purposes only. Layouts and Individual features, specifications and items may vary or be substituted for replacement layouts, features, specifications or items of equivalent standard and style. The above material is correct at the time of print but may be subject to change as necessary and without notice. Specifications and graphic materials are not intended to form part of any contract or warranty unless specifically incorporated in writing into the contract.



Disclaimer: all specifications, pictures, diagrams, layouts, photographs and other graphic material used are for illustrative purposes only. Layouts and Individual features, specifications and items may vary or be substituted for replacement layouts, features, specifications or items of equivalent standard and style. The above material is correct at the time of print but may be subject to change as necessary and without notice. Specifications and graphic materials are not intended to form part of any contract or warranty unless specifically incorporated in writing into the contract.





Just for the rooftop garden

Discover your very own rooftop garden at the Just Cavalli luxury villas in a unique space where you can appreciate and seek out nature in a tranquil garden. Offering the ideal environment for relaxation, entertainment and play, your rooftop garden is just another reason for you to reconnect and recharge.



Just for fitness

You could mistake the fitness club for one of Miami's most extravagant night spots; wild patterns, ambient lighting and a massive ceiling mirror help amplify the experience.

The Just Cavalli Gym has been designed specifically for the discerning athlete, with modern equipment and access to luxury amenities, including a world-class tennis court and jogging track. Training has never been more fashionable!



Just for the mind and body

Created in harmony with Just Cavalli's innovative brand of design, you'll discover a peaceful space in which to unwind, relax and clear your mind.

The luxurious spa and wellness centre is surrounded by nature with views out across lush gardens - the perfect place to take a break and de-stress.



Just for the community

Venture into a community created for a select few. Spend afternoons exploring the great outdoors, or creating new adventures with your children in dedicated play areas. Spend evenings taking a cool dip in the uniquely designed swimming pool where you can soak away the stresses of the day.

VISTA LUX

Just for fun

These luxury villas with interiors by Just Cavalli are located in AKOYA Oxygen, one of Dubai's greenest communities. You'll find serene escapes, dancing fountains, entertainment facilities and luxury retail just a few steps from your home. Epicures will also be delighted with a selection of fine dining restaurants offering delectable dishes from around the world.





Just for golf

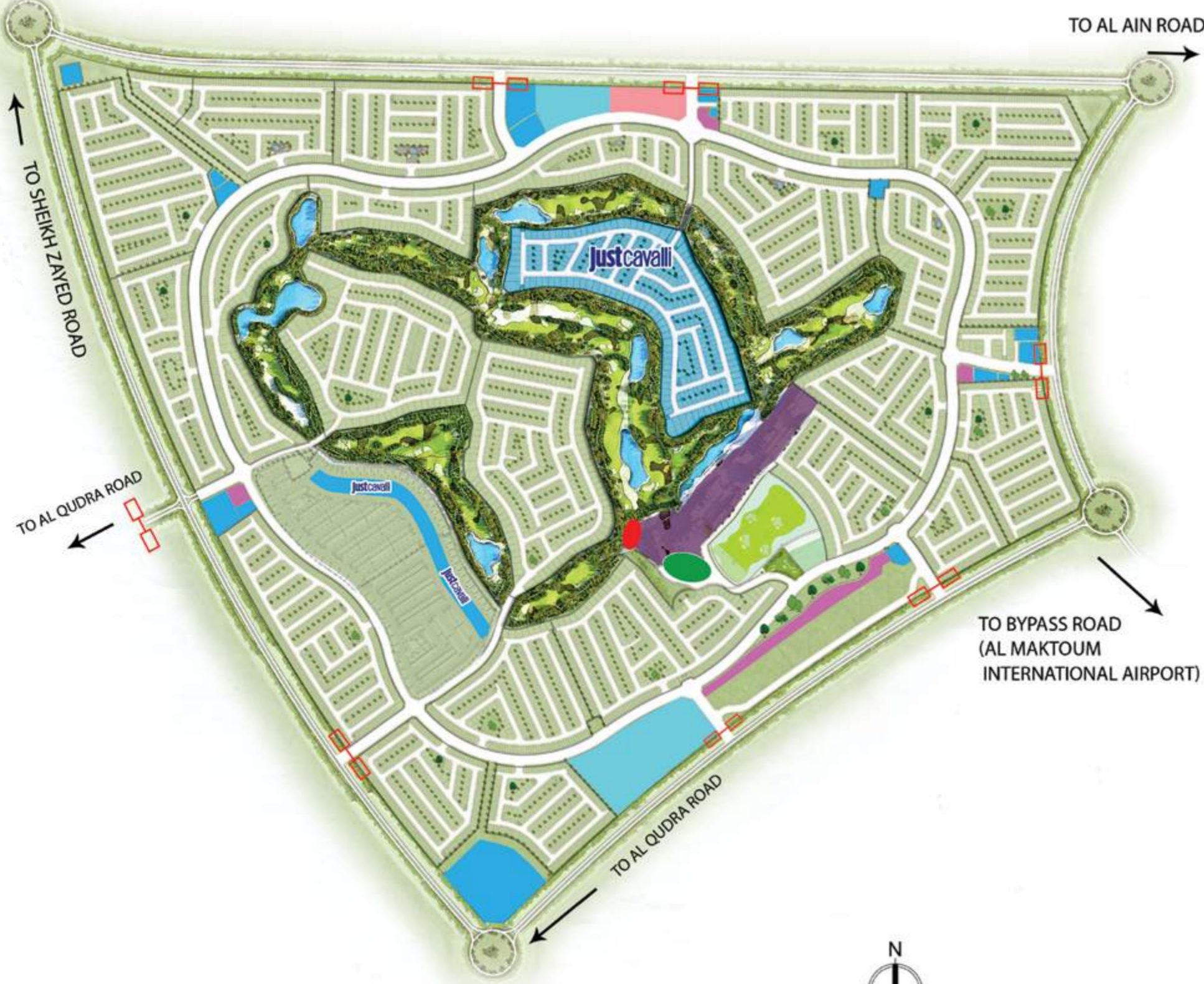
Avid golfers will enjoy the international golf course at AKOYA Oxygen, featuring a clubhouse, expansive pro shop and world-class training facilities.



Just for the location

AKOYA Oxygen boasts a strategic location with access to major road networks. You'll be able to reach important business hubs, entertainment destinations and attractions with ease.

AKO₂YA OXYGEN



- VISTA LUX
- RETAIL AREA
- TRUMP WORLD GOLF CLUB DUBAI
- DUBAI RAINFOREST
- ENTRANCE GATE
- Just Cavalli
- MASTER PLAN SERVICES
- RESIDENTIAL | RETAIL
- SCHOOLS

AQUILEGIA



1. COMMUNITY GATE



2. OUTDOOR CINEMA



3. WELLNESS AREA



4. SWIMMING POOL



5. FITNESS CENTRE

- V2-C
- RC-EE
- RCB-M
- RC-EM
- RCB-EE
- RC-M
- RCB-EM

AMARGO



RC-EE RC-EM RC-M

AVENCIA



RC-EE RC-EM RC-M

V2-C



GROUND FLOOR



FIRST FLOOR



GROUND FLOOR



FIRST FLOOR

Unit type	Ground floor	First floor	Balcony / terrace & external covered area	Covered garage	Total area
V2-C	1,361	1,488	291	100	3,240

All areas have been measured in square feet.

Unless stated otherwise, all accessories and interior finishes such as wallpaper, chandeliers, furniture, electronics, white goods, curtains, hard and soft landscaping, pavements, features, swimming pool(s) and other elements displayed in the brochure, or within the show apartment or between the plot boundary and the unit, are not part of the standard unit and are shown for illustrative purposes only.

RC-EE



GROUND FLOOR



FIRST FLOOR



TERRACE



GROUND FLOOR



FIRST FLOOR

Unit type	Ground floor	First floor	Second floor / Roof	Balcony / terrace & external covered area	Covered garage	Total area
RC-EE	470	652	167	720	134	2,143

All areas have been measured in square feet.

Unless stated otherwise, all accessories and interior finishes such as wallpaper, chandeliers, furniture, electronics, white goods, curtains, hard and soft landscaping, pavements, features, swimming pool(s) and other elements displayed in the brochure, or within the show apartment or between the plot boundary and the unit, are not part of the standard unit and are shown for illustrative purposes only.

RC-M



GROUND FLOOR

FIRST FLOOR

TERRACE

Unit type	Ground floor	First floor	Second floor / Roof	Balcony / terrace & external covered area	Covered garage	Total area
RC-M	461	639	163	705	131	2,099

All areas have been measured in square feet.

Unless stated otherwise, all accessories and interior finishes such as wallpaper, chandeliers, furniture, electronics, white goods, curtains, hard and soft landscaping, pavements, features, swimming pool(s) and other elements displayed in the brochure, or within the show apartment or between the plot boundary and the unit, are not part of the standard unit and are shown for illustrative purposes only.

RC-EM



GROUND FLOOR

FIRST FLOOR

TERRACE

Unit type	Ground floor	First floor	Second floor / Roof	Balcony / terrace & external covered area	Covered garage	Total area
RC-EM	470	652	167	720	134	2,143

All areas have been measured in square feet.

Unless stated otherwise, all accessories and interior finishes such as wallpaper, chandeliers, furniture, electronics, white goods, curtains, hard and soft landscaping, pavements, features, swimming pool(s) and other elements displayed in the brochure, or within the show apartment or between the plot boundary and the unit, are not part of the standard unit and are shown for illustrative purposes only.

RCB-EE

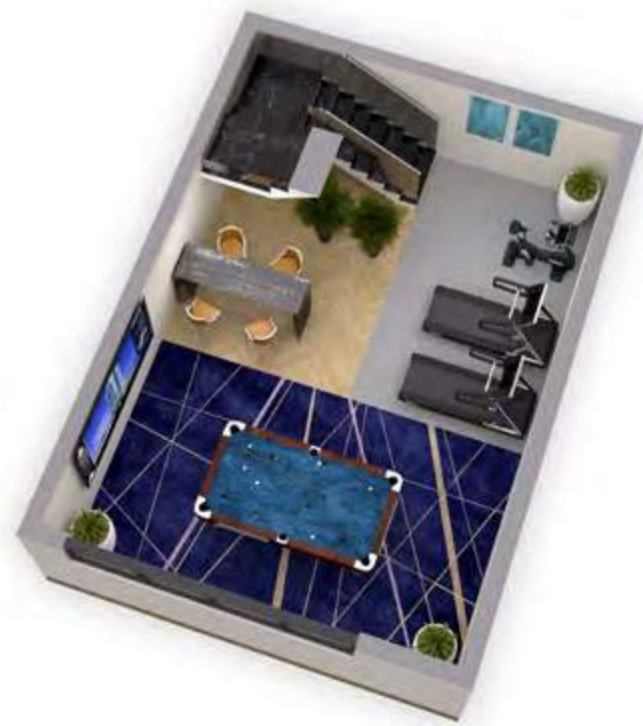


LOWER GROUND

GROUND FLOOR

FIRST FLOOR

TERRACE



LOWER GROUND



GROUND FLOOR



FIRST FLOOR

Unit type	Lower ground	Ground floor	First floor	Second floor / Roof	Balcony / terrace & external covered area	Covered garage	Total area
RCB-EE	608	470	652	167	798	134	2,829

All areas have been measured in square feet.

Unless stated otherwise, all accessories and interior finishes such as wallpaper, chandeliers, furniture, electronics, white goods, curtains, hard and soft landscaping, pavements, features, swimming pool(s) and other elements displayed in the brochure, or within the show apartment or between the plot boundary and the unit, are not part of the standard unit and are shown for illustrative purposes only.

RCB-M

RCB-EM



LOWER GROUND

GROUND FLOOR

FIRST FLOOR

TERRACE



LOWER GROUND

GROUND FLOOR

FIRST FLOOR

TERRACE

Unit type	Lower ground	Ground floor	First floor	Second floor / Roof	Balcony / terrace & external covered area	Covered garage	Total area
RCB-M	595	461	639	163	783	131	2,772

All areas have been measured in square feet.

Unit type	Lower ground	Ground floor	First floor	Second floor / Roof	Balcony / terrace & external covered area	Covered garage	Total area
RCB-EM	608	470	652	167	798	134	2,829

All areas have been measured in square feet.