


SAFATWO

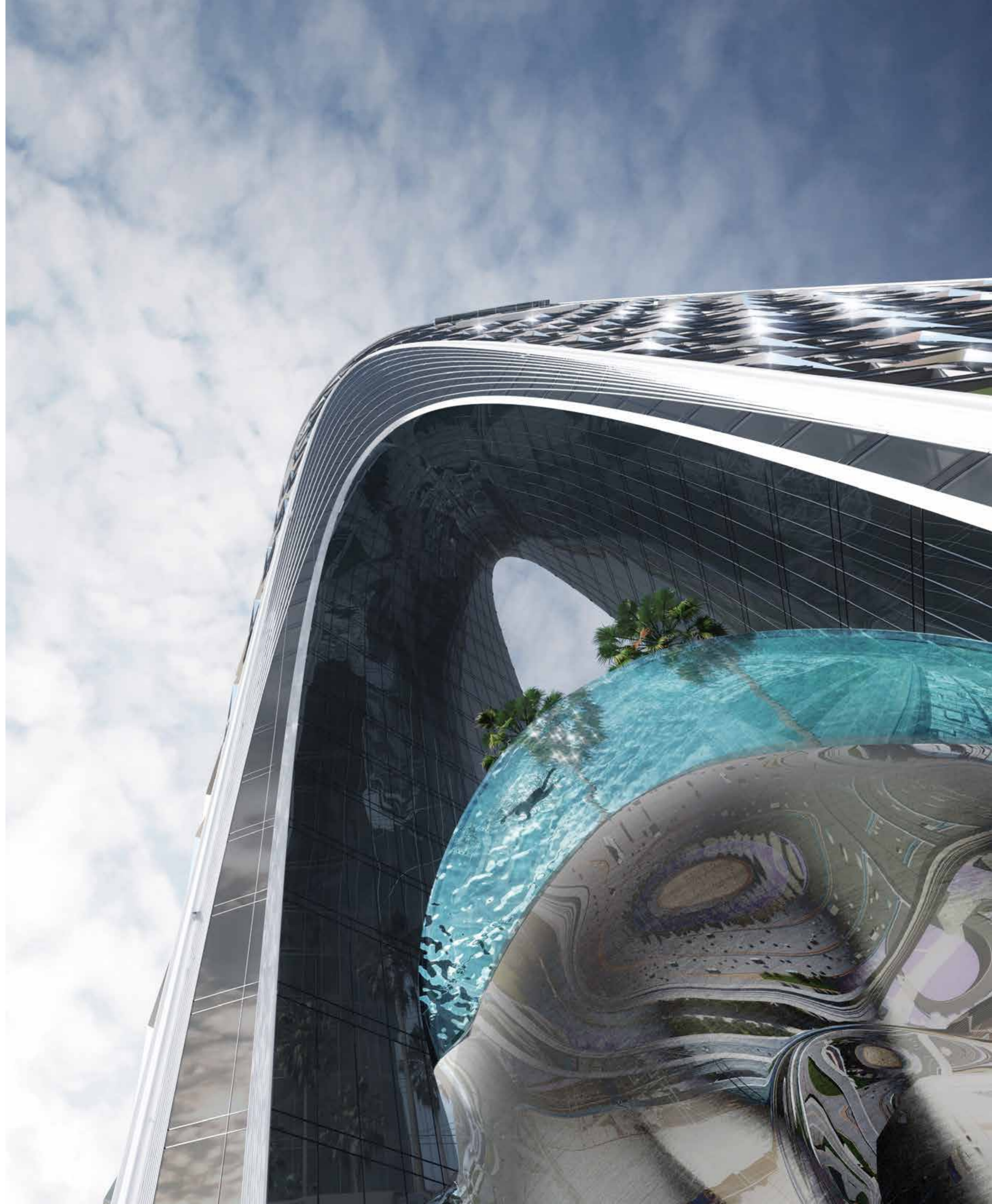
de GRISOGONO
GENEVE

DAMAC



THE FUTURE OF LUXURY

A S E Q U E L
S O
S T U N N I N G ,
I T ' S
O U T O F
T H I S
W O R L D .





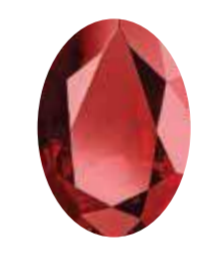
I M A G I N E B E I N G
F A C E T O F A C E W I T H
A D R E A M C O M E T R U E .

A P L A C E T H A T G O E S
B E Y O N D A N Y T H I N G
Y O U ' V E E V E R K N O W N .





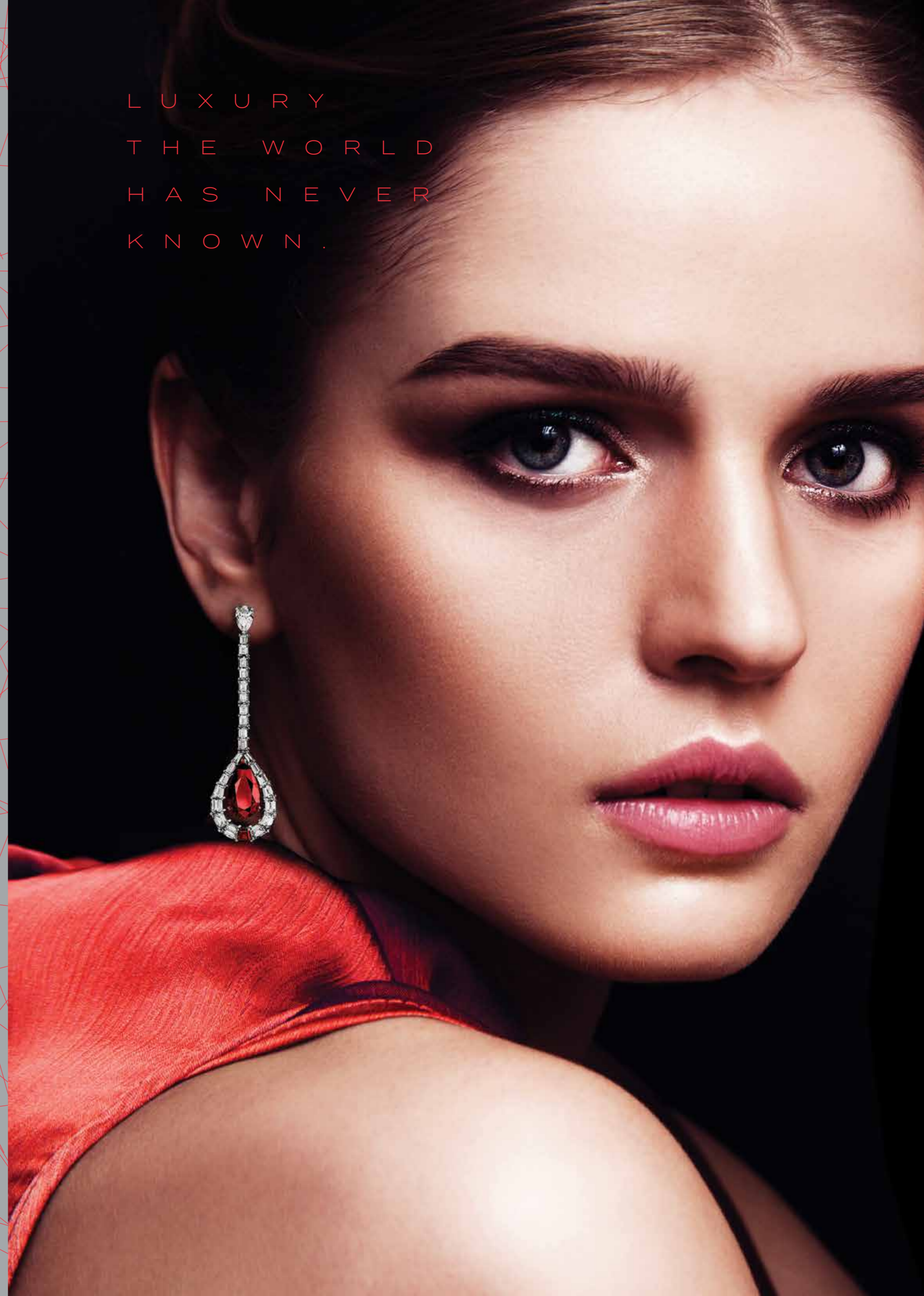
T H E S P A R K L E
O F P O S S I B I L I T Y .



T H E F I N E L I N E S
O F T H E F U T U R E .
T H E D E S I G N O F
T H I N G S T O C O M E .

UNEXPECTED
UNFORGETTABLE
UNIMAGINABLE

LUXURY
THE WORLD
HAS NEVER
KNOWN.



T O D A Y

A N D H E R E ,
W H E R E T O D A Y
A N D T O M O R R O W
M E E T , I S W H E R E
Y O U C O M E I N .

T O M O R R O W

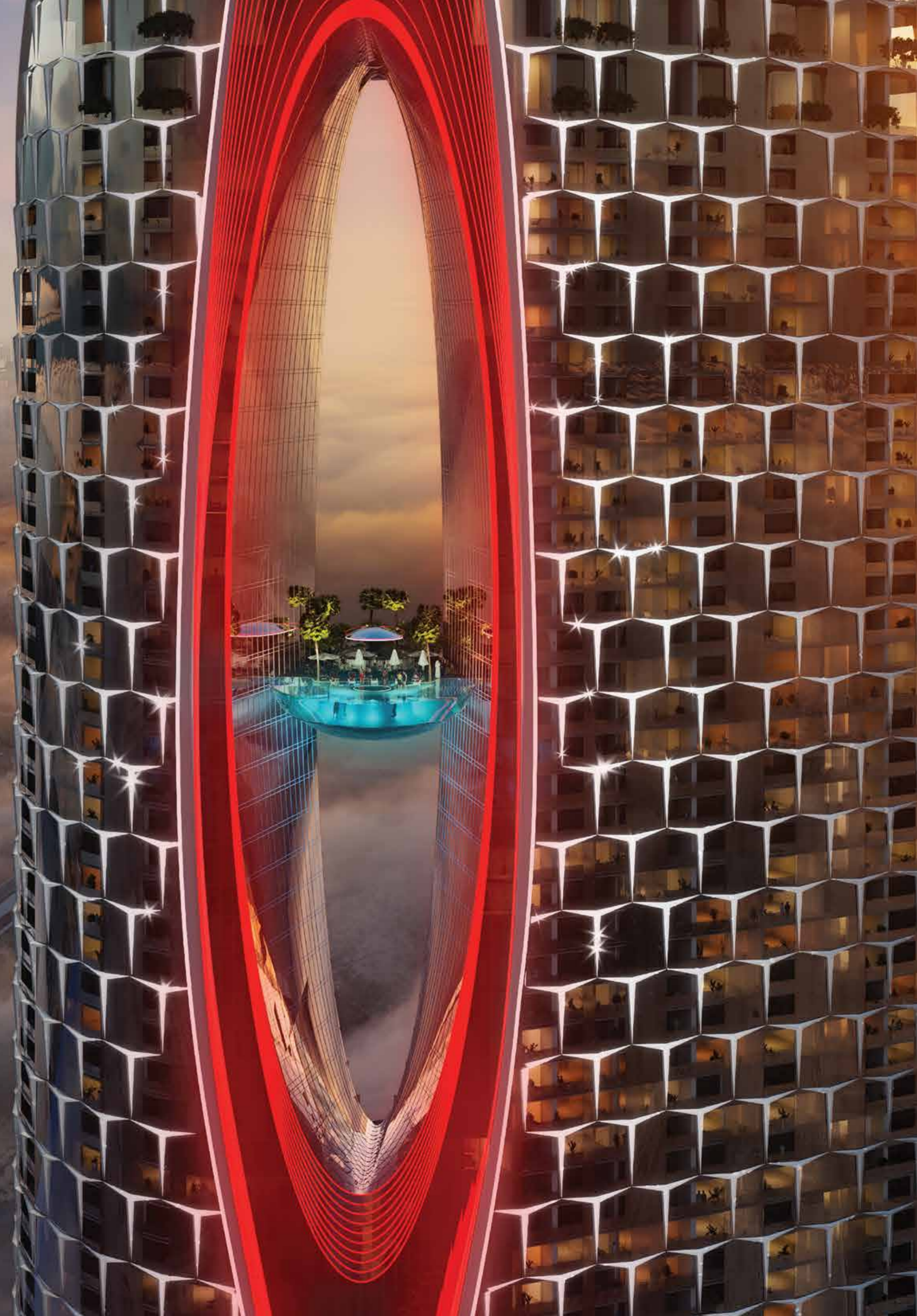
S E T Y O U R E Y E S
O N T H E F U T U R E
A N D R A C E I N T O
T H E P O S S I B I L I T I E S .

S T E P I N T O T H E
L U X U R Y O F T H E
U N K N O W N A N D
A C C E P T A N
I N V I T A T I O N I N T O
T H E I M P O S S I B L E .



WELCOME HOME
TO THE **FUTURE**.
WELCOME TO

SAFATWO







S A F A T W O I S
E X C L U S I V E L Y
B R A N D E D B Y
D E G R I S O G O N O
O F S W I T Z E R L A N D



de GRISOGONO
GENEVE



INSPIRED BY THE DE GRISOGONO SIGNATURE RUBIES AND THE COLOUR OF CHANGE, EXCITEMENT AND LIFE ITSELF, THE TOWER SHOWCASES STUNNING SCARLET SHADES RIGHT FROM THE MAGNIFICENT LOBBY ENTRANCE TO THE INTERIOR DETAILING AND FURNITURE.



S T E P
I N T O
T H E
L I G H T

INSPIRED BY THE SUN,
THE DAZZLING SPLENDOR
THAT IS SAFA TWO IS SET
TO BECOME THE MOST
PROMINENT LANDMARK ON
THE CITY'S GOLDEN MILE.
ITS UNIQUE DESIGN, MEANT
TO EMULATE A CUT DIAMOND,
IS INSTANTLY RECOGNIZABLE
FROM MILES AWAY.

G A T E W A Y T O T H E C I T Y

S A F A T W O S I T S A C R O S S T H E R O A D F R O M S A F A O N E , A N D T O G E T H E R , T H E T W O D E V E L O P M E N T S A R E P O I S E D T O F O R M A N E L E G A N T A R C H W A Y , M A R K I N G T H E P A S S A G E B E T W E E N C E N T R A L D U B A I A N D I T S N E W E R A R E A S . T H E F O R M E R H A S B E E N I N T E N T I O N A L L Y D E S I G N E D T O O F F E R R E S I D E N T S S T U N N I N G V I E W S A L L A R O U N D , I N C L U D I N G T H O S E O F T H E C A N A L , B U R J A L A R A B , T H E W O R L D I S L A N D S A N D T H E P A L M J U M E I R A H .





S O A K
U P
T H E
S U N

UNEXPECTED AND EXCEPTIONAL, THE AMENITIES ARE OBVIOUSLY, SECOND TO NONE. DESIGNED TO STAND OUT, THE PODIUM LEVEL ARTIFICIAL BEACH POOL TRANSPORTS YOU TO THE SANDS OF NAVAGIO OR LA CONCHA, GIVING YOU EVERY EXCUSE TO BASK IN THE SHADE OF NATURAL PALM TREES AS YOU TAKE IN THE MAGNIFICENT DUBAI SKYLINE.







T H E
R U B Y
H E A R T





DIP INTO
INFINITY

HIGH ABOVE THE PODIUM
ON THE 60TH FLOOR SITS
ONE OF SAFA TWO'S UNIQUE
FEATURES AND POSSIBLY
ITS MOST RECOGNIZABLE
ONE - THE APPROPRIATELY
NAMED 'RUBY HEART'.





APART FROM BEING AN ARCHITECTURAL
MARVEL, THE HEART ALSO HOSTS
SEVERAL OPULENT AMENITIES SUCH AS
A ONE-OF-A-KIND SAPPHIRE INFINITY
POOL OVERLOOKING SHEIKH ZAYED
ROAD AND HIGH-END RESTAURANTS.





Y O U R
U N I Q U E
A D D R E S S

ABOVE THE RUBY HEART ARE THE
SUPER LUXURY FLOORS OF SAFA TWO,
WHICH ARE IN TURN CROWNED BY
THE 85TH FLOOR, RESPLENDENT WITH
A HOST OF AVANT-GARDE AMENITIES
DESIGNED TO TAKE YOUR BREATH AWAY.

FOG FOREST

OBSERVATORY

EDGE WALK

GLASS SLIDE

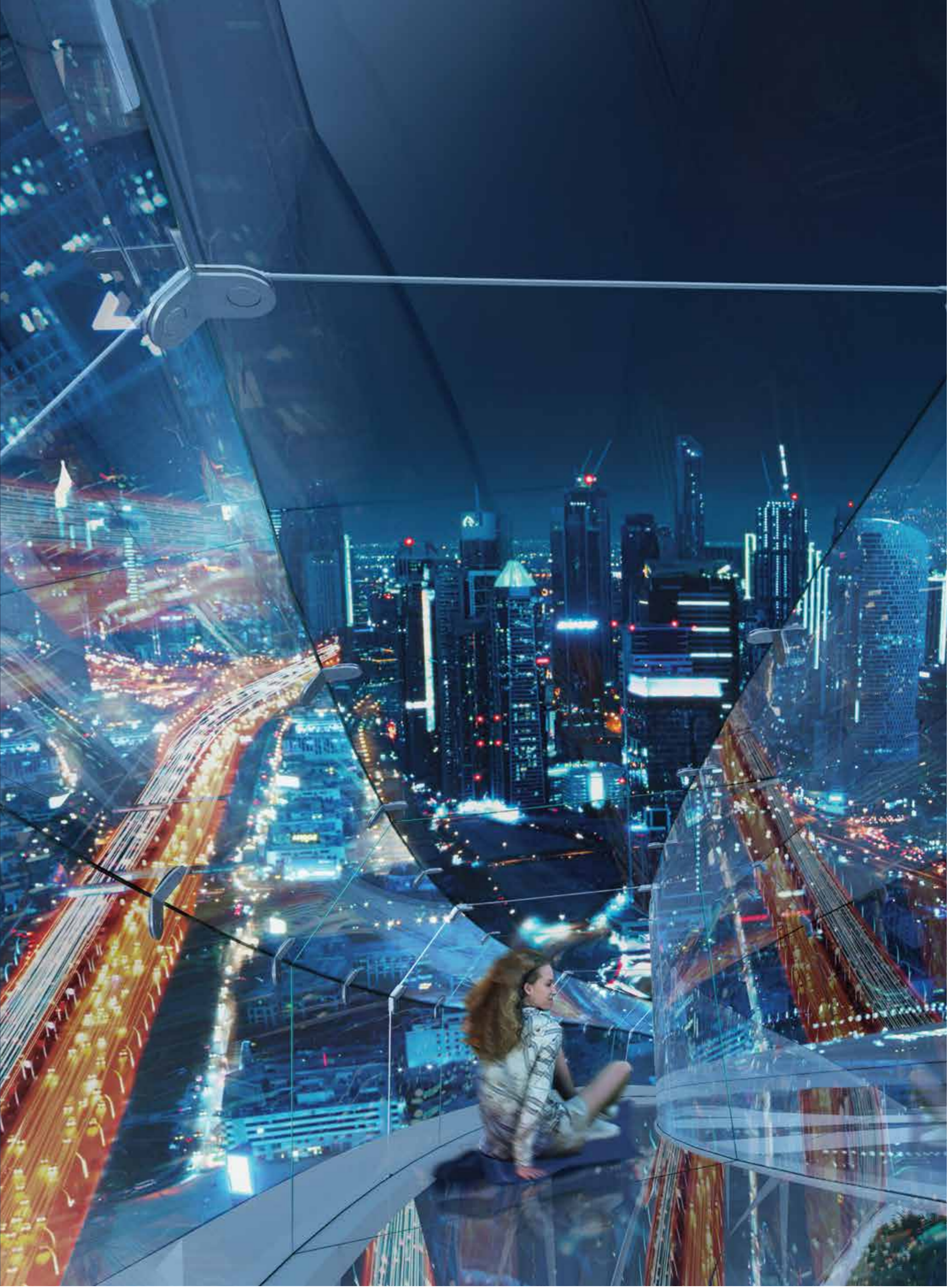
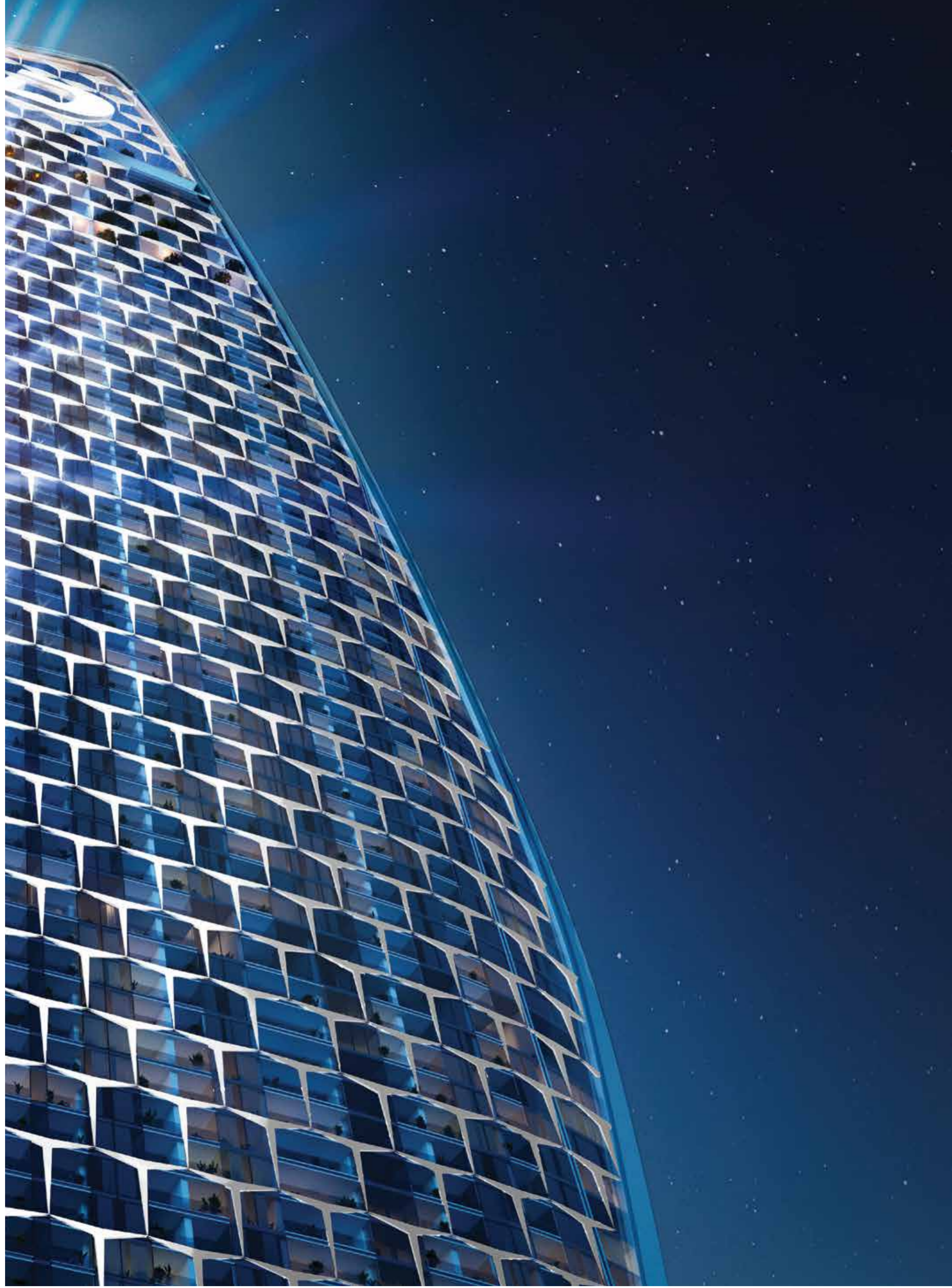
SELECTION OF CAFES
& RESTAURANTS



W A L K
A B O V E
T H E
C L O U D S

THE SAFA TWO EDGE WALK EXPERIENCE PROVIDES A GENEROUS DOSE OF ADRENALINE FOR THRILL-SEEKERS AS THEY WALK ON THE EDGE OF THE ABYSS, LOOKING DOWN AT THE CLOUDS. NOT TO BE OUTDONE, THE SPIRALLING GLASS SLIDE IS SET TO BE AN EXHILARATING RIDE THAT COMES WITH A TRULY SPECTACULAR VIEW OF THE HEART OF DUBAI FOR THOSE DARING ENOUGH TO TRY IT.







O N T O P

O F T H E

W O R L D

IMAGINE A ROOFTOP TROPICAL PARADISE PERPETUALLY SHROUDED IN MIST. NOT ONLY IS THIS DUBAI'S FIRST AND ONLY FOG FOREST, IT'S ALSO THE HIGHEST ONE IN THE WORLD.



LET CALM WASH OVER AS YOU STROLL THROUGH THIS ETHEREAL GARDEN OR DINE AT THE RESTAURANT. FOR A CHANGE OF VIEW, VISIT THE HIGHEST ACCESSIBLE POINT IN THE BUILDING AT THE SAFA TWO OBSERVATORY AND TAKE IN THE MESMERISING VIEWS OF THE CITY AROUND YOU AND THE FOREST BELOW.

H O M E S
O F T H E
F U T U R E



TRANSFORMATIVE



LIVING SPACES



EACH LUXURY APARTMENT MAKES USE OF IMPECCABLE TRANSFORMATIVE LIVING SPACES, USING MOVABLE WALLS TO GIVE YOU COMPLETE FLEXIBILITY OVER YOUR HOME. CHANGE THE LAYOUT WHENEVER YOU WANT - IT'S AS SIMPLE AS OPENING A DOOR OR A WINDOW.



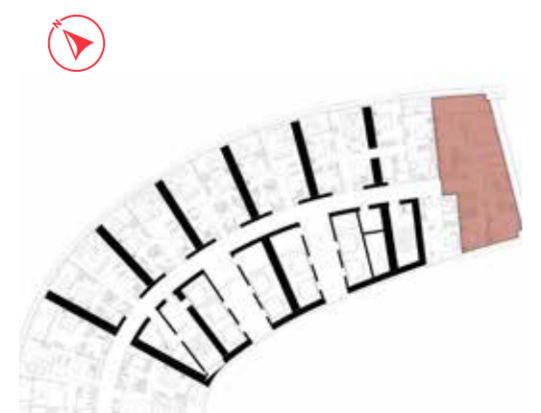






3 BEDROOM

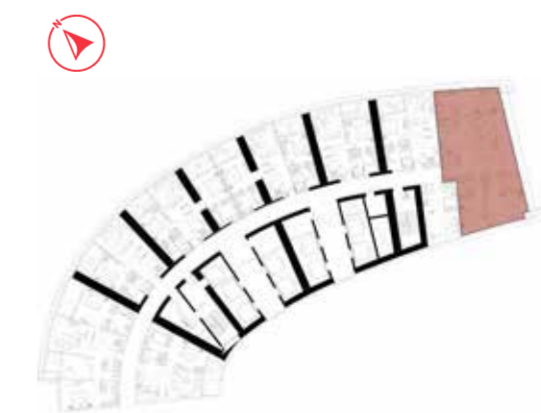
TYPE-5
LEVELS: 26-30



LEVELS: 26,27,28,29,30

3 BEDROOM

TYPE-6
LEVELS: 31-36



LEVELS: 31,32,33,34,35,36