



# KETURAH

RESERVE

WELCOME TO KETURAH RESERVE TRANSFORMATIONAL LIVING  
THROUGH THE DESIGN OF SPACE



Mohammed Bin Rashid City District 7 (MBR7)  
25.2048° N, 55.2708° E

KETURAH RESERVE

BIO LIVING  
DESIGN PROCESS

## WELCOME TO KETURAH RESERVE

A transformational living through the design of space



Mohammed Bin Rashid City District 7 (MBR7)  
25.2048° N, 55.2708° E

KETURAH RESERVE

BIO LIVING  
DESIGN PROCESS

## THE MEANING OF KETURAH

KETURAH is an Arabic word for the fragrance traditionally diffused throughout the home to welcome guests.



# PORTFOLIO

KETURAH RESERVE

BIO LIVING  
DESIGN PROCESS

THE BRIEF

keturah Reserve

Meydan

Dubai

Keturah Reserve at Meydan

DESIGN CONCEPT

Naturally Sustainable

The FLOW, Air, Light, Colour, Space

4 Bedroom Rowhouse Superhome

4 Bedroom Back-to-Back Superhome

5 Bedroom Rowhouse Superhome

DESIGN AND TECHNICAL DEVELOPMENT

MEYDAN HOME-OWNER

KETURAH RESERVE'S SERVICES AND AMENITIES

PAYMENT PLAN

CONTACT



THE MESSAGE

“Keturah Reserve is uniquely conceived and designed.

Each detail has been crafted with care to elevate and enrich the lives of every generation of our residents.

Our vision is for Keturah Reserve residents to be the happiest, best fulfilled people in Dubai.”

Talal M. Al Gaddah  
Founder and CEO



Mohammed Bin Rashid City District 7 (MBR7)  
25.2048° N, 55.2708° E

KETURAH RESERVE

BIO LIVING  
DESIGN PROCESS





Mohammed Bin Rashid City District 7 (MBR7)  
25.2048° N, 55.2708° E

KETURAH RESERVE  
BIO LIVING  
DESIGN PROCESS

KETURAH  
GYM  
GROCERY  
APARTMENT  
LOBBY ENTRANCE  
MEDITATION  
BUSINESS AREA  
SPA  
YOGA

# THE BRIEF

Dubai is the capital of innovation, one of the most dynamic and exciting cities in the world.

Equally, Keturah Reserve at Meydan is the most innovative and exciting New Luxury development in Dubai, with a brand-new concept, transformational living through the design of space.









# KETURAH RESERVE, NEW LUXURY

New Luxury is raw and silent. It elevates and empowers, evoking the profound emotional well-being of mind and body through the design of interior, exterior and personal space. It connects residents with the surrounding nature through Bio Living.





# BIO LIVING AT KETURAH RESERVE

Bio Living is inspired by Biophilic Design, the concept of creating architecture and interiors to enable residents to connect with the surrounding nature. All five human senses are engaged by nature, improving physical and mental well-being and adding real value to residents' lives. Bio Living respects all life forms, flora, fauna and human.





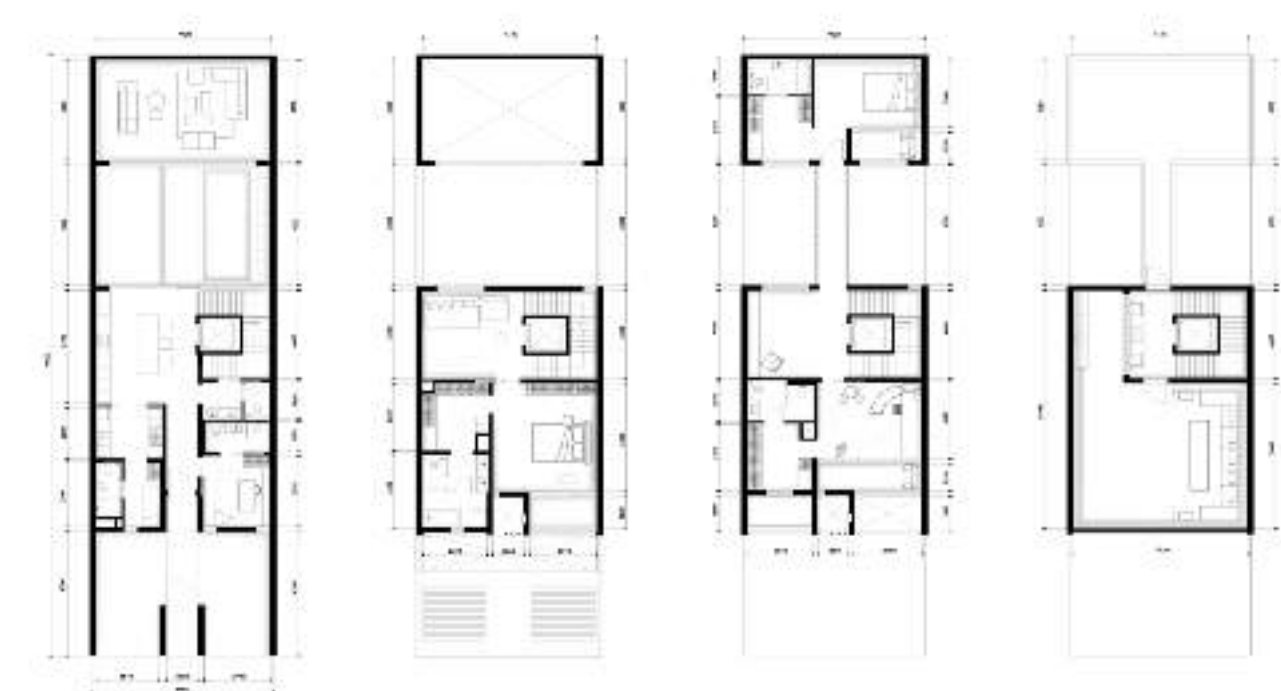


Mohammed Bin Rashid City District 7 (MBR7)  
25.2048° N, 55.2708° E



KETURAH RESERVE

BIO LIVING  
DESIGN PROCESS



**DESIGNED FROM THE INSIDE OUT**

We spend 90% of our lives indoors.  
It is where we reconnect with our emotions and our inner self.

Keturah Reserve SuperHomes are uniquely conceived and designed from the inside out using contemporary architectural principles of the five elements, proportions, ratio and daylight, in raw and natural materials to create harmony in space.



# WHY DUBAI?

Dubai is the City of the Future, one of the most exciting, inspirational and successful cities in the world, the global headquarters of crypto currency in DMCC.

Its thriving expat community of over 200 nationalities comprises 80% of the population. Dubai is a pioneer for future urban living with sustainable development an integral part of its Green 2040 Vision.

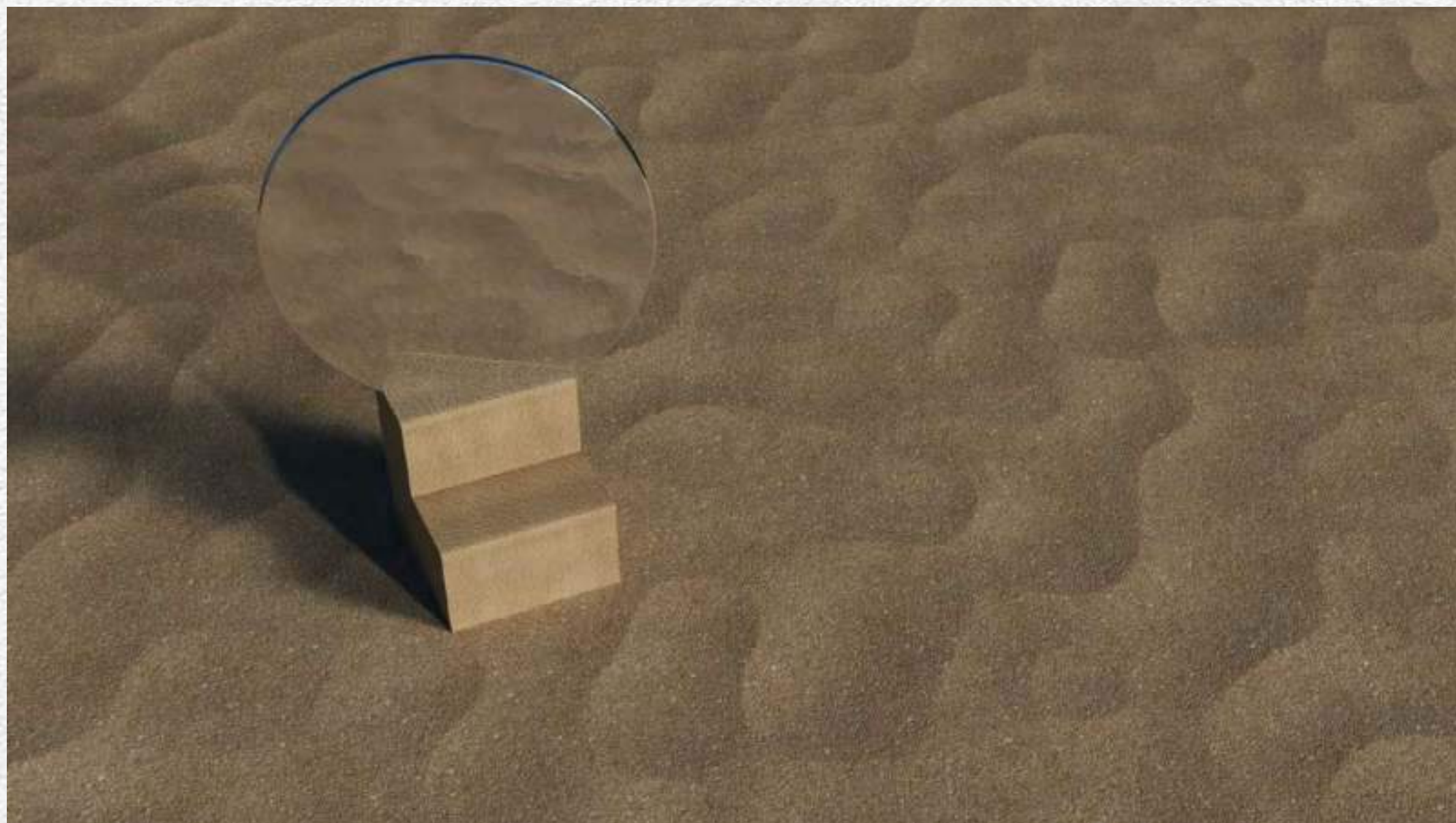


# THE MEYDAN STORY

Meydan is an Arabic word for an open, urban space for public discussion that traces its origin to the Ottoman Empire.

Keturah Reserve at Meydan is one of Dubai's most exclusive addresses. Meydan is a new sustainable and environmentally friendly development owned by His Highness Sheikh Mohammed bin Rashid Al Maktoum.

It encloses the world-renowned Meydan Racecourse and Grandstand, home of the Dubai World Cup horse racing event.





## KETURAH RESERVE AT MEYDAN

Keturah Reserve is uniquely located at Meydan, the only residential development in Dubai with a direct 7-minute link to Downtown, with four separate exits onto the city's main thoroughfares.

1. KETURAH RESERVE BY MAG
2. MAG LOGISTICS
3. MAG 318
4. BURJ KHALIFA
5. DUBAI WATER CANAL
6. MEYDAN ONE MALL
7. MEYDAN GRANDSTAND
8. MEYDAN GOLF COURSE
9. EMIRATES FINANCIAL TOWERS BY MAG
10. DUBAI DESIGN DISTRICT
11. DUBAI SANCTUARY
12. AL AIN / DUBAI HIGHWAY
13. AL KHAIL HIGHWAY
14. AL MEYDAN ROAD
15. SHEIKH ZAYED ROAD
16. ETIHAD RAIL MAIN STATION





ACCESSIBILITY

- Dubai International Airport, 21 minutes
- Downtown, 7 minutes
- DIFC Financial Center, 12 minutes
- Business Bay, 15 minutes
- Dubai Design District, 15 minutes
- The Beach, 20 minutes
- Blue Waters, 30 minutes

ART AND CULTURE

- Museum of The Future, 20 minutes
- Dubai Public Library, 25 minutes
- OliOli® - Experiential Play Museum for Kids, 20 minutes
- Butterfly Garden, 30 minutes
- Alserkal Avenue, 20 minutes

MALLS

- Dubai Mall, 20 minutes
- Dubai Hills Mall, 15 minutes
- Meydan One Mall, 15 minutes

EDUCATION

- Gems-Willington-Private School, 17 minutes
- The English College, 15 minutes
- Dubai International Private School, 17 minutes
- Hartland International School Dubai, 16 minutes
- Swiss International Scientific School, 15 minutes

HEALTHCARE

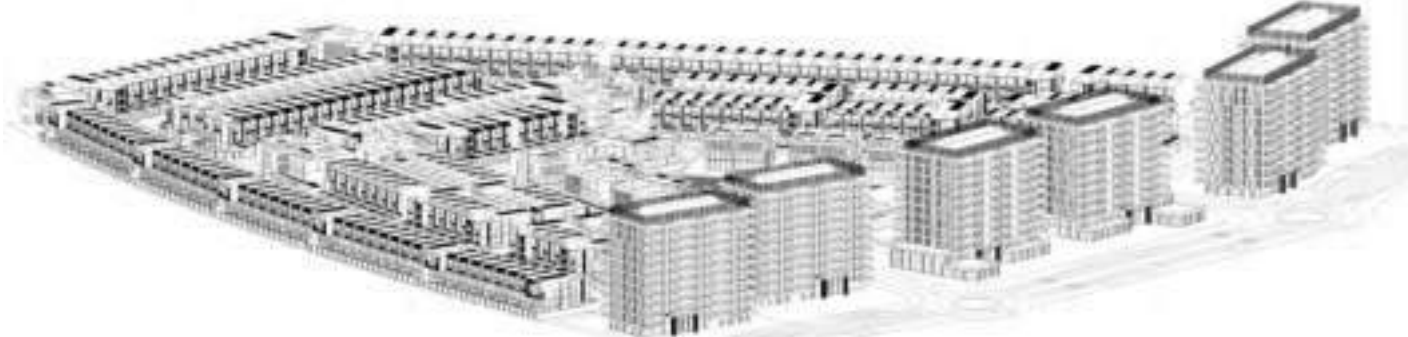
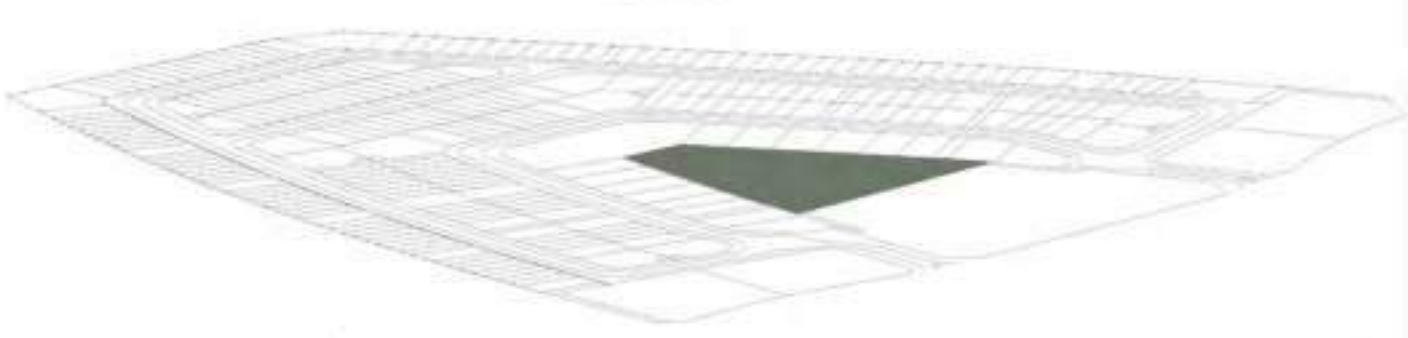
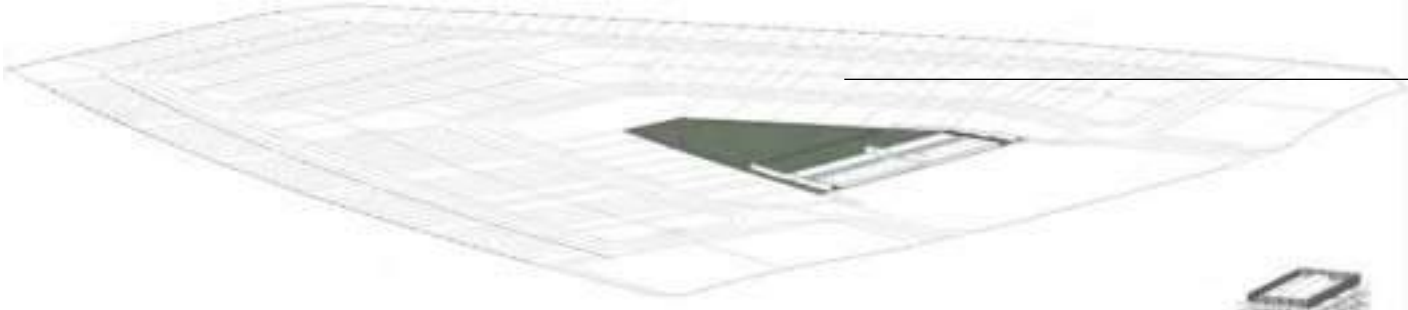
- Medcare Hospital, 15 minutes
- Emirates Hosp. Clinics, 17 minutes
- Mediclinic City Hospital, 19 minutes
- American Hospital Dubai, 19 minutes
- King's College Hospital, 9 minutes

GOLF CLUBS

- Meydan Golf, 10 minutes
- Dubai Hills Golf Club, 15 minutes
- Emirates Golf Club, 24 minutes







AMENITIES

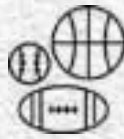
KETURAH  
RESERVE

DESIGNED FOR EVERY GENERATION

Every resident, women, men and children of all ages will find their perfect niche in Keturah Reserve.

DESIGNED FOR ALL LIFE SPECIES

Keturah Reserve is landscaped with indigenous trees and plants that need little water to thrive in the local climate, attracting birds, animals and insects.



SPORTS

- GYM
- Cross Fit
- Tennis
- Football
- Swimming
- Basketball
- Handball
- Squash
- Martial Arts
- Padel Tennis
- Studios
- Gymnastics
- Shooting
- Fencing



SUPPLEMENTARY SERVICES

- 18+ Roof Pool
- Family & Kids Pool
- Ladies Pool
- Sauna & SPA
- Family Lounges
- Cinema
- Nursery
- Clinic
- Kids Park
- Green Areas
- Jogging Tracks
- Co-Working Stations
- Gaming & VR Areas



FOOD & BEVRAGE

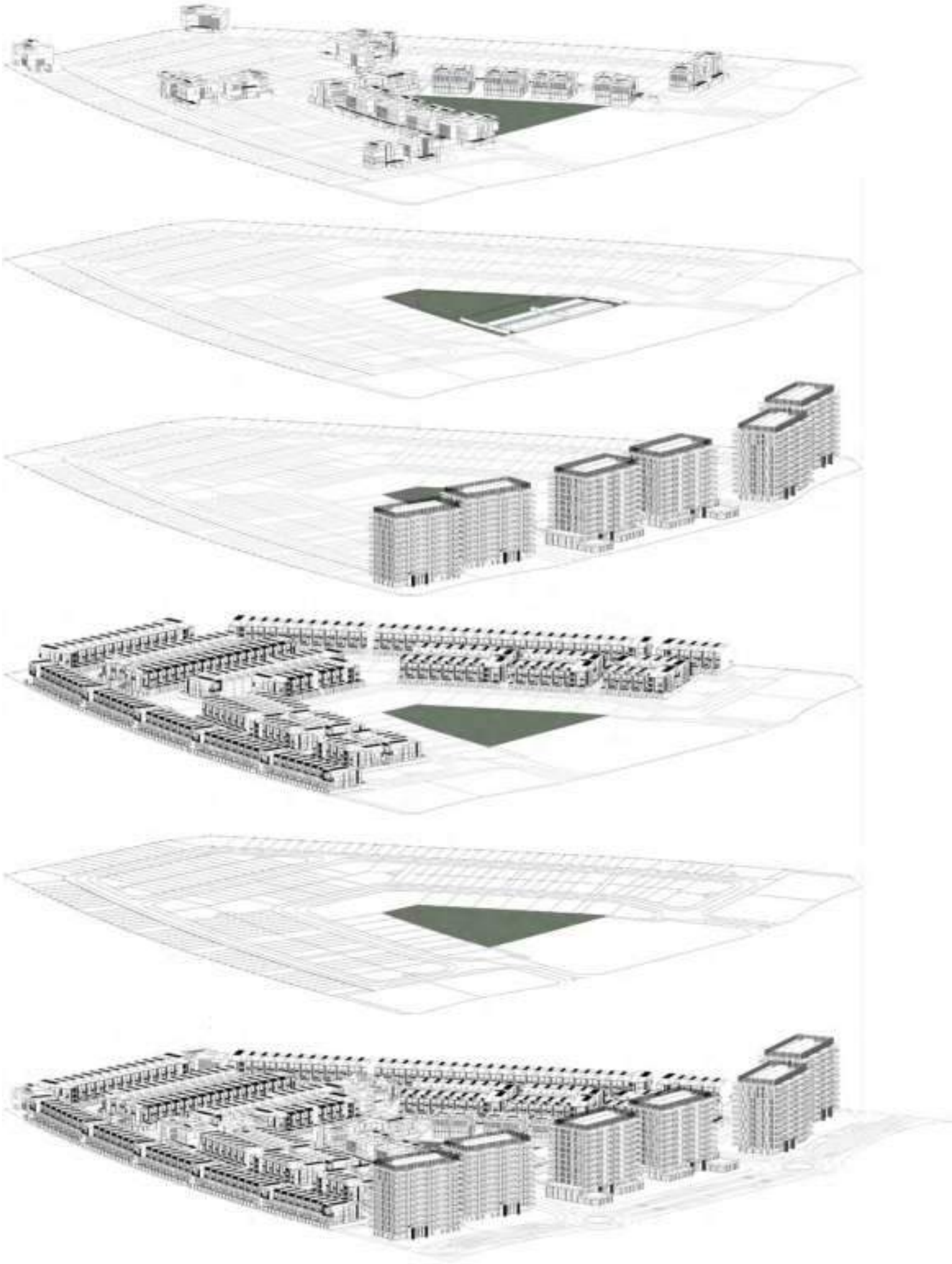
- Restaurants
- Kiosks
- Juice Bars



CULTURAL

- Art School for kids & adults





# KETURAH RESERVE

## SUPERHOMES

### 4-Bedroom Superhome

3-storey with lift, double car park, outdoor pool, terrace with seating area and roof deck

Prototype		Nos.
Row House	Regular	73 Units
Row House	Corner	10 Units
Back-To-Back	Regular	27 Units
Back-To-Back	Corner	4 Units

### 5-Bedroom Superhome

3-storey with lift, double car park, outdoor pool, terrace with seating area and roof deck

Prototype	Nos.
Row House	10 Units

## VILLAS

Prototype	Nos.
Plots designated for signature villas	69

## APARTMENTS

Prototype		Nos.
1-Bedroom Unit	Regular	144 Units
1-Bedroom Unit	Corner	36 Units
2-Bedroom Unit	Regular	172 Units
2-Bedroom Unit	Corner	100 Units
3-Bedroom Unit	Regular	16 Units
4-Bedroom Unit	Regular	8 Units



*My Space, My Mind.*







KETUKAH  
GYM  
GROCEKRY  
APARTMENT  
LOBBY ENTRANCE  
MEDITATION  
BUSINESS AREA  
BUSINESS AREA  
SPA  
YOGA













**MEDITATION SPACE**

Throughout Keturah Reserve,  
inside is linked to outside through nature, visible at every vista.





## INVIGORATE SPACE

Pilates at the Invigorate Space.

All activities at Keturah Reserve develop the inner core, strengthening the body from the inside out.



Mohammed Bin Rashid City District 7 (MBR7)  
25.2048° N, 55.2708° E

KETURAH RESERVE

BIO LIVING  
DESIGN PROCESS

WELL-BEING

- Water Bike Pool
- Indoor Invigorate Space gym with oxygen tunnel entryway
- Outdoor Invigorate Space gym





## WELL-BEING

- Indoor Zen Space for mediation
- Yoga
- Silk Rope Classes
- Sound Healing
- Mother and Baby classes
- Dance Studio



Mohammed Bin Rashid City District 7 (MBR7)  
25.2048° N, 55.2708° E



**COMMUNAL SPECIAL EVENTS SPACE**

Special events with seating  
and fully equipped kitchen.



Mohammed Bin Rashid City District 7 (MBR7)  
25.2048° N, 55.2708° E

KETURAH RESERVE

BIO LIVING  
DESIGN PROCESS

*My Space, My Mind*



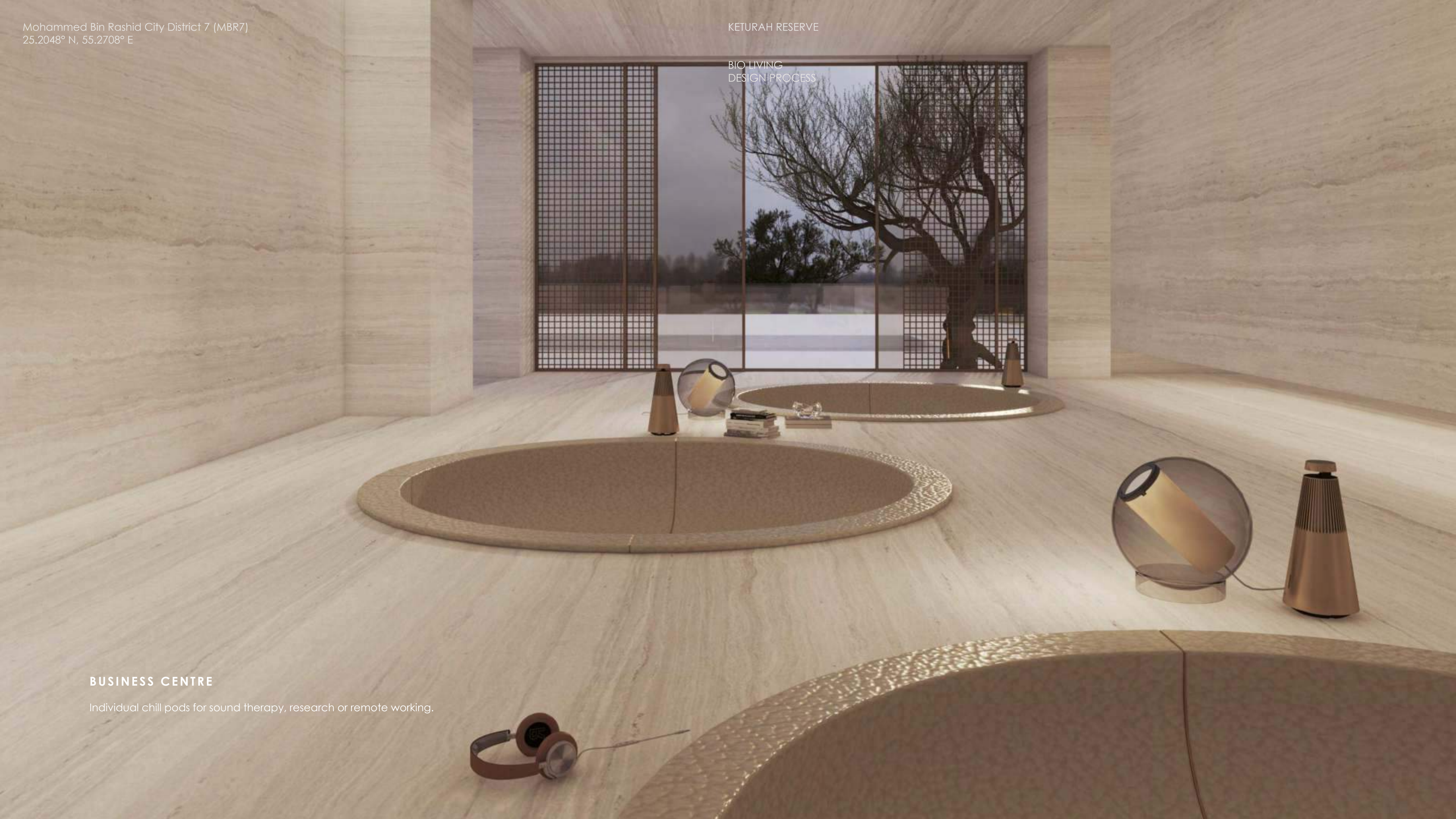
Mohammed Bin Rashid City District 7 (MBR7)  
25.2048° N, 55.2708° E

KETURAH RESERVE

BIO LIVING  
DESIGN PROCESS

**BUSINESS CENTRE**

Individual chill pods for sound therapy, research or remote working.





Mohammed Bin Rashid City District 7 (MBR7)  
25.2048° N, 55.2708° E

RETURNA RESERVE

BIOLOGY  
DESIGN ROOM

**BUSINESS CENTRE**

The naturally lit 24-hour Business Centre is equipped with ergonomic seating and a circular reference library.



Mohammed Bin Rashid City District 7 (MBR7)  
25.2048° N, 55.2708° E

KETURAH RESERVE

BIO LIVING  
DESIGN PROCESS

**My Space, My Mind.**

- Spa, Hair and Beauty Salon for Women
- Spa and Hair Salon for Men





Mohammed Bin Rashid City District 7 (MBR7)  
25.2048° N, 55.2708° E

KETURAH RESERVE

BIO LIVING  
DESIGN PROCESS

**My Space, My Mind.**

Keturah Reserve understands the care and value that goes into choosing a home that can grow and fit with all the needs of generations to come.



Mohammed Bin Rashid City District 7 (MBR7)  
25.2048° N, 55.2708° E

KETURAH RESERVE

BIO LIVING  
DESIGN PROCESS

KID'S PLAY SPACE

The Kids' Play Space with textile playground sculptures by the award-winning artist, Toshiko MacAdam.





KID’S PLAY SPACE

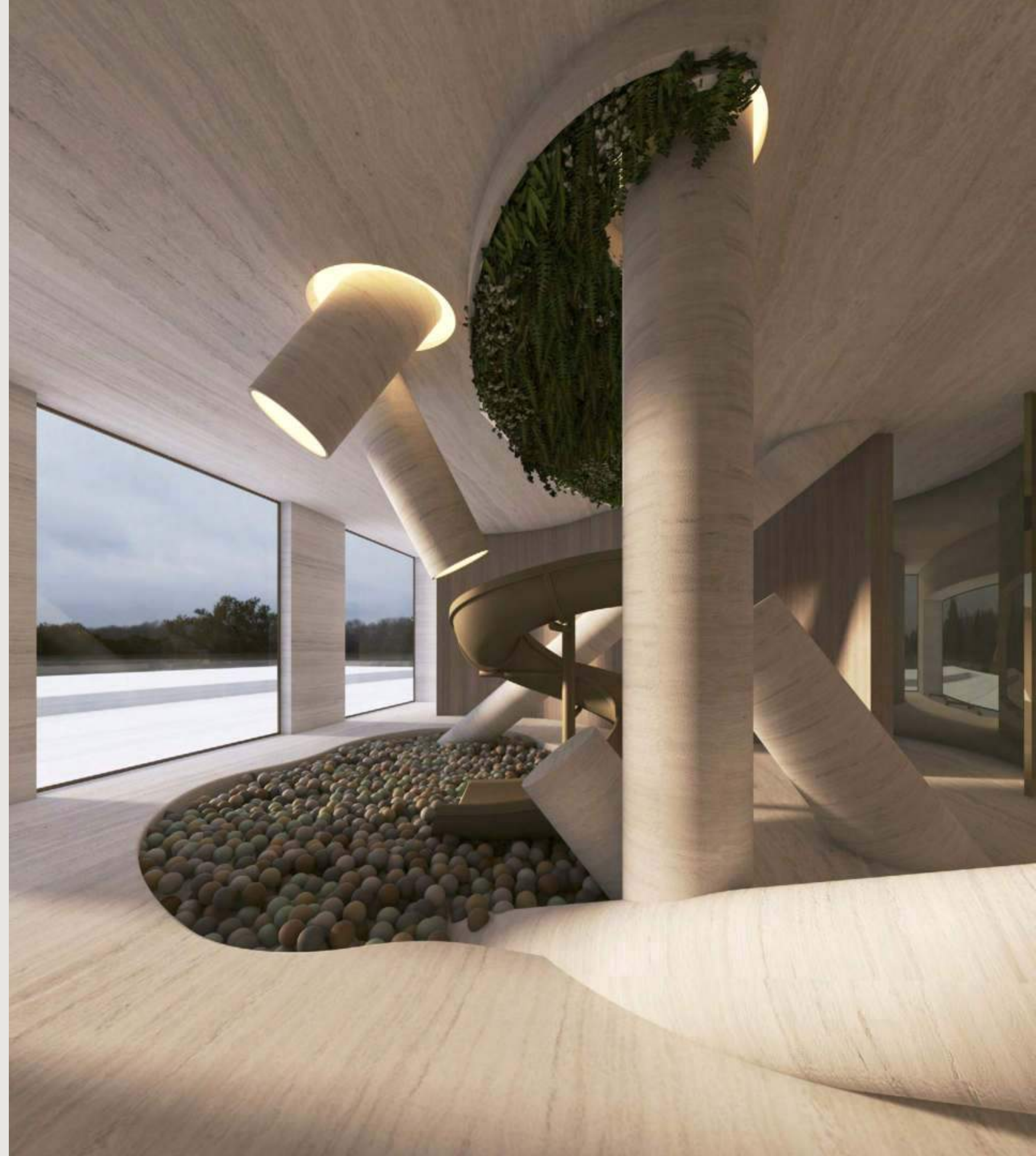
- Shaded organic kids’ pool and play area
- Playground for babies and toddlers
- Playground for 7- to 14-year-olds
- Kids Bio Living Farm





Mohammed Bin Rashid City District 7 (MBR7)  
25.2048° N, 55.2708° E

Keturah Reserve integrates technology for accelerated learning of the younger generations.





## ELEVATION OF THE SUPERHOME

Each three-storey superhome is composed of two distinct parts,  
the communal space in front, the private space behind.  
A passerelle connects the two.

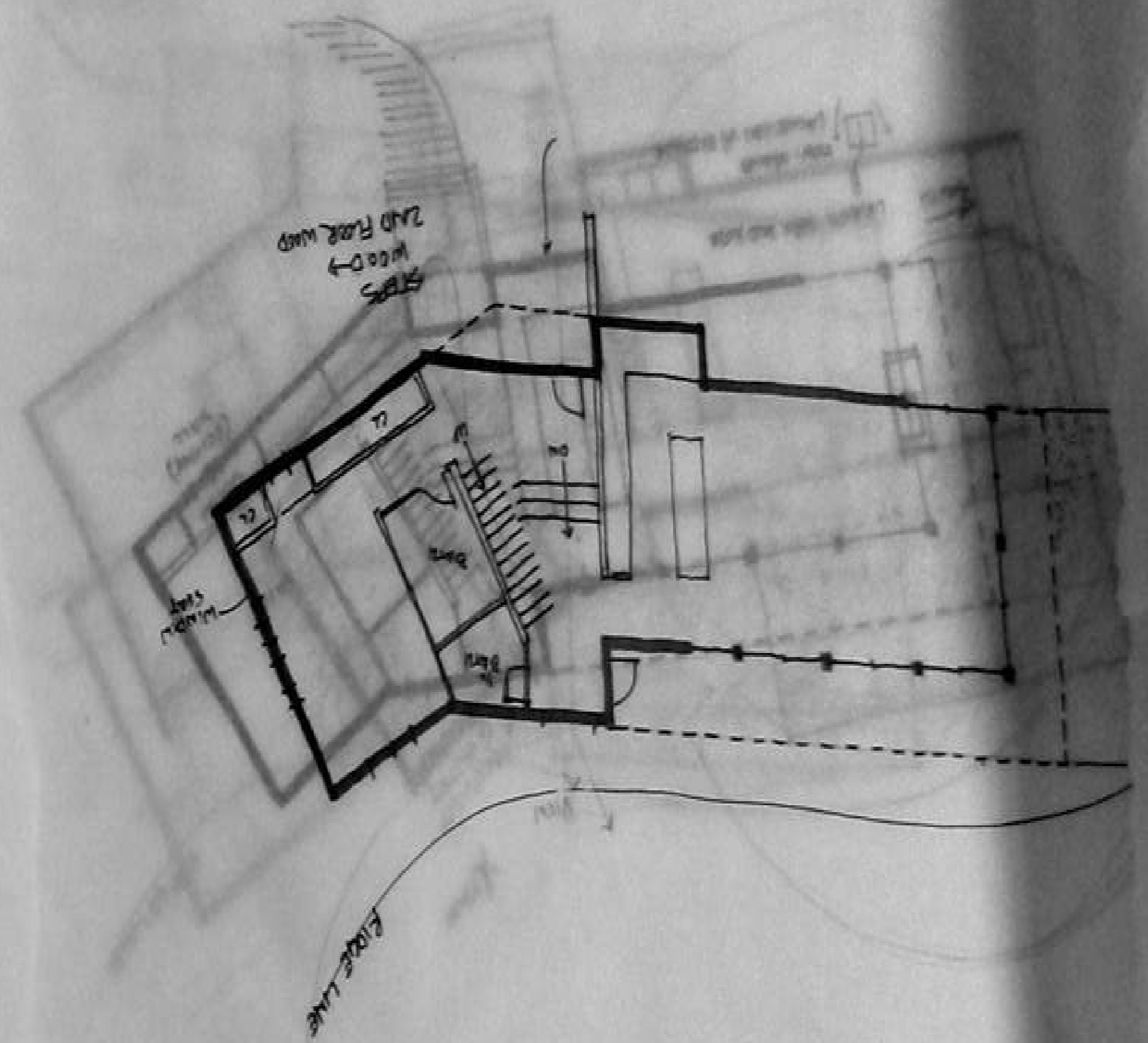
The roof deck has an outdoor pool, terrace, barbeque with seating  
and storage area.



9

12

19





Mohammed Bin Rashid City District 7 (MBR7)  
25.2048° N, 55.2708° E



FAÇADE DESIGN

KETURAH RESERVE

BIO LIVING  
DESIGN PROCESS





Mohammed Bin Rashid City District  
25.2048° N, 55.2708° E



KETURAH RESERVE

BIO LIVING  
DESIGN PROCESS





Mohammed Bin Rashid City District 7 (MBR7)  
25.2048° N, 55.2708° E



FAÇADE DESIGN

KETURAH RESERVE

BIO LIVING  
DESIGN PROCESS





Mohammed Bin Rashid City District 7 (MBR7)  
25.2048° N, 55.2708° E



FAÇADE DESIGN

KETURAH RESERVE

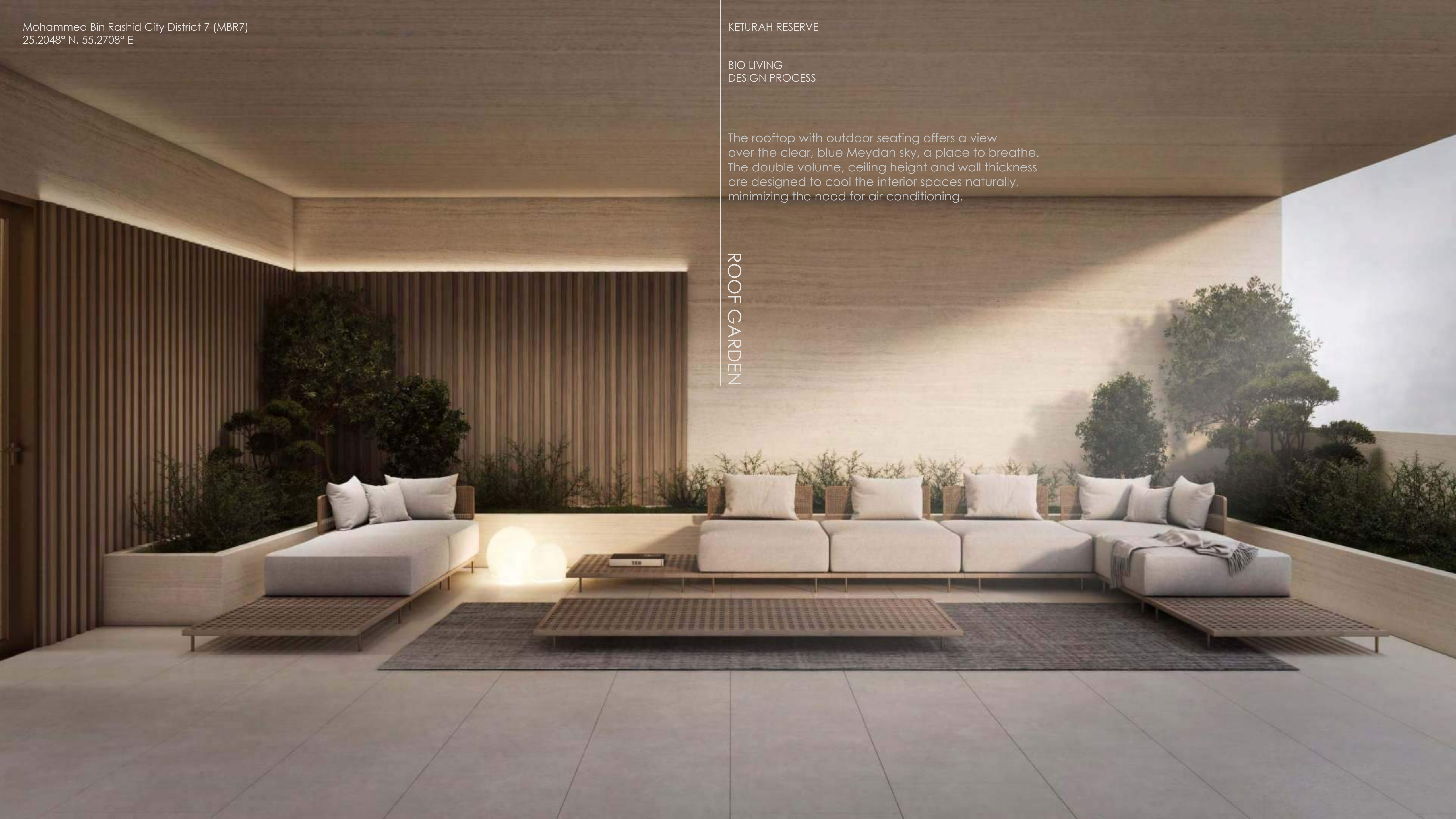
BIO LIVING  
DESIGN PROCESS





The rooftop with outdoor seating offers a view over the clear, blue Meydan sky, a place to breathe. The double volume, ceiling height and wall thickness are designed to cool the interior spaces naturally, minimizing the need for air conditioning.

ROOF GARDEN



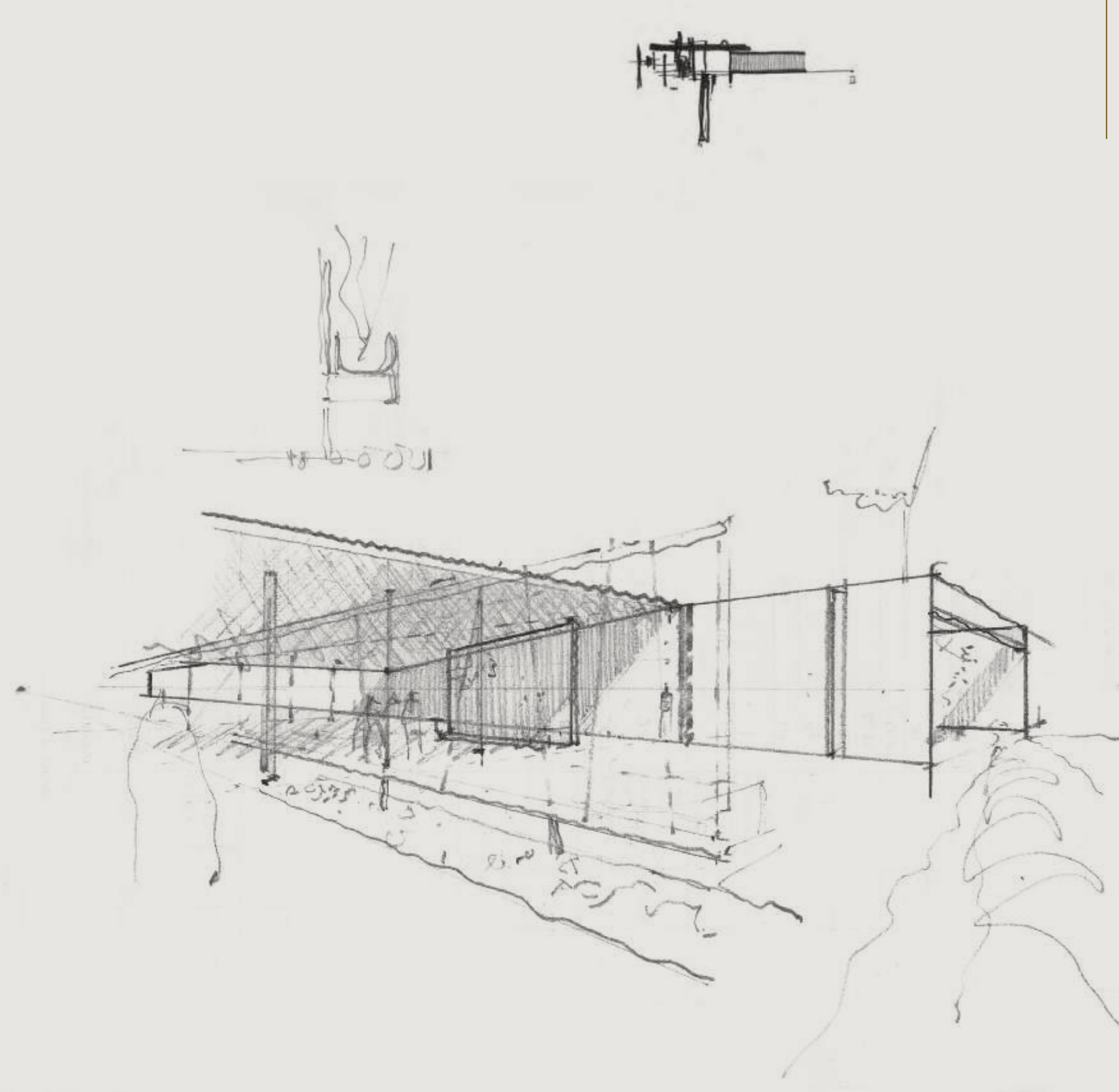




NATURAL SUSTAINABILITY AT KETURAH RESERVE

- Keturah Reserve is designed to be naturally self-sustaining from conception.
- All amenity areas are accessible by foot on tree shaded pathways, eliminating the need of driving from place to place.
- Floorplans are created based on established material measurements to avoid material and energy waste. Materials are specifically selected for their adaptability to the microclimate of Meydan.
- Raw wood is fired a minimum six times to increase durability and resistance to wear and tear.
- High ceilings, wall thickness and windowpane density cool the interior naturally, saving energy by reducing the need for air conditioning.
- Balconies are broader than the norm to reduce the heat and glare of direct sunlight.
- Door frames and garages are wider to facilitate the flow of passage.
- New Luxury integrates sustainability naturally without the need of further human involvement.





**KETURAH RESERVE SUPERHOMES, DESIGNED FROM THE INSIDE OUT**

Keturah Reserve is uniquely conceived and designed from the inside out using principles of the five elements, proportions, ratio and light, and natural materials. All residences are fully furnished, with furniture and fixtures custom-designed and produced for each space in natural, raw materials and in neutral colours. They blend perfectly into the interior, freeing the residents' movement and circulation, and elevating their physical and mental well-being.

Keturah Reserve's Super Home™ Concept is designed to transform residents' lives through their experience of the interior and exterior space.



# THE FLOW OF AIR, LIGHT, COLOUR , SPACE, TEXTURE AND MATERIAL



## THE FLOW OF AIR

Keturah Reserve homes are designed with double volume interior spaces, naturally increasing the flow of air. Keturah Reserve's super-efficient VRF (Variable Refrigerant Flow) technology reduces energy costs, improves residents' comfort, and sends cooled air to evaporators in different spaces, maintaining an even, consistent temperature by zone. The air filtration system silently eliminates pollen, cooking odors and smoke, continuously purifying and refreshing the air.



## THE FLOW OF LIGHT

The architecture of Keturah Reserve is designed to optimize natural daylight without its heat or glare. When daylight fades, architectural lighting optimizes the body's circadian system, enhancing residents' mood, comfort and alertness, and improving the quality of their sleep.

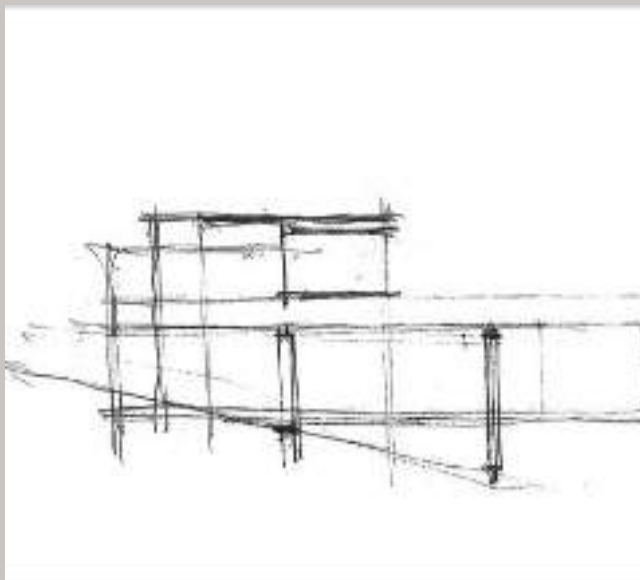
Lighting is always lateral, never directly overhead, to optimize visual comfort, enhance the space and create atmosphere by zone, for a subtle and healing ambiance



## THE FLOW OF COLOUR

The architecture of Keturah Reserve homes blends into the rawness of the desert landscape, to create an ambiance of solace and serenity. The bleached bone-coloured travertine facade links the exterior to the interior, with bronze vertical slats creating a subtle interplay of light and shade.

The three cool-neutral tone-on-tone palette of cream, champagne and bronze, and three textures of wood, stone and metal, are inspired by the natural colours and textures of the surrounding desert.



## THE FLOW OF SPACE

Keturah Reserve homes are conceived and designed from the inside out using contemporary architectural principles of the five elements, proportions, ratio and daylight, in raw, natural materials.

The double volume open plan spaces optimize the flow of passage, without corridors or hallways. Furniture and fixtures are custom-designed for each residence and produced for each space.

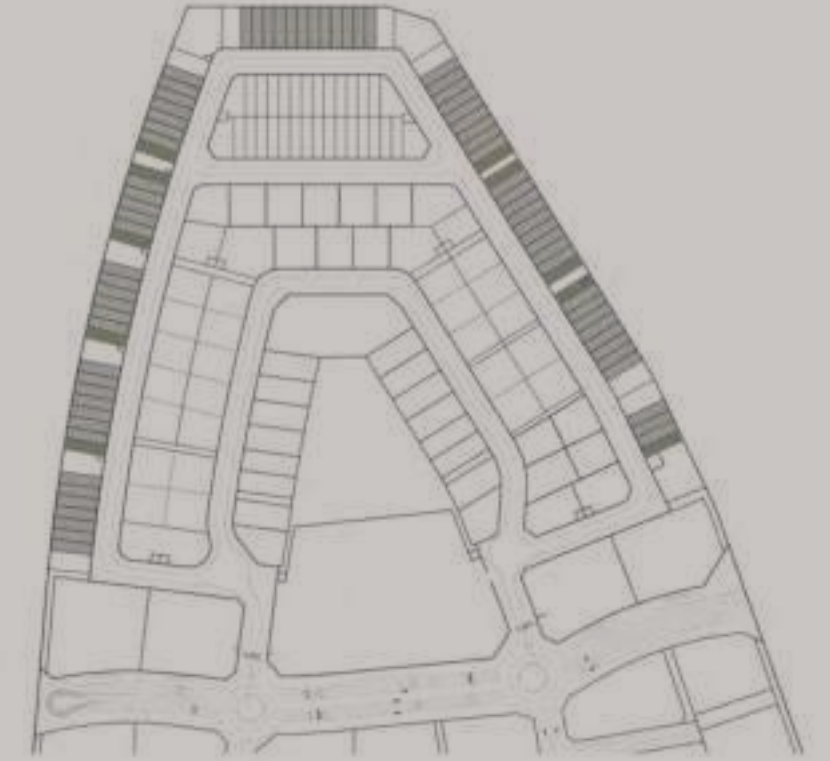
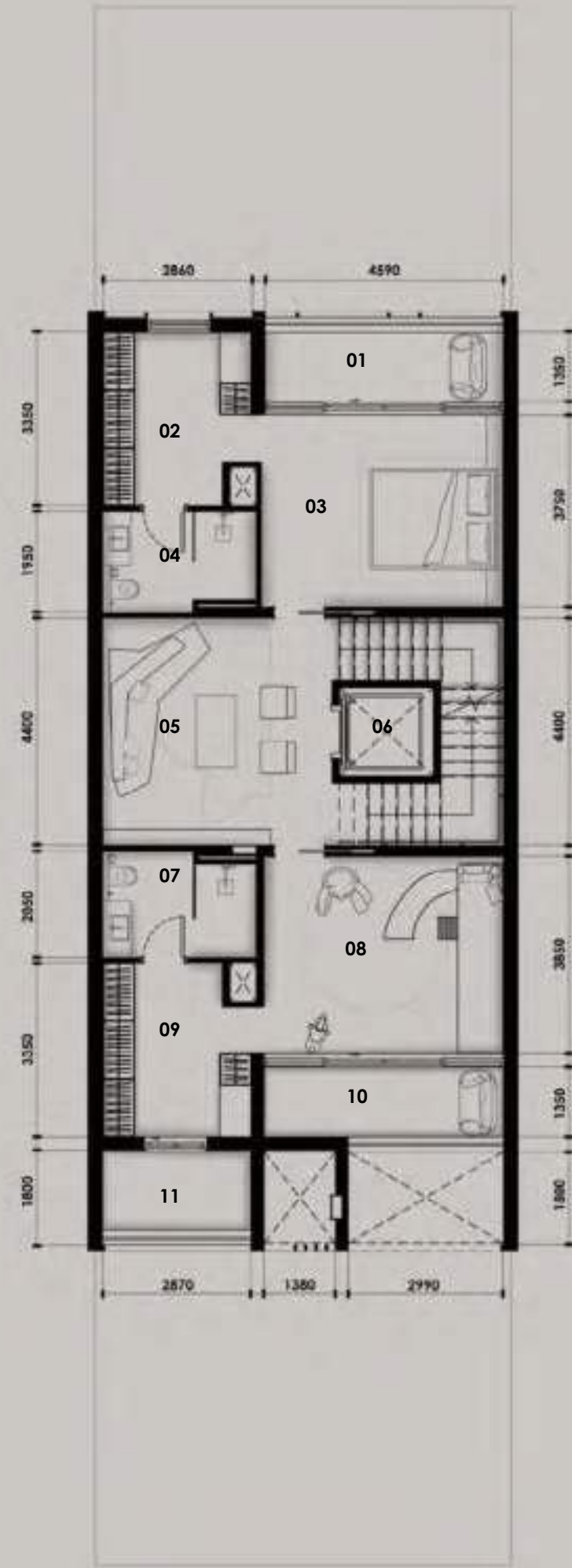
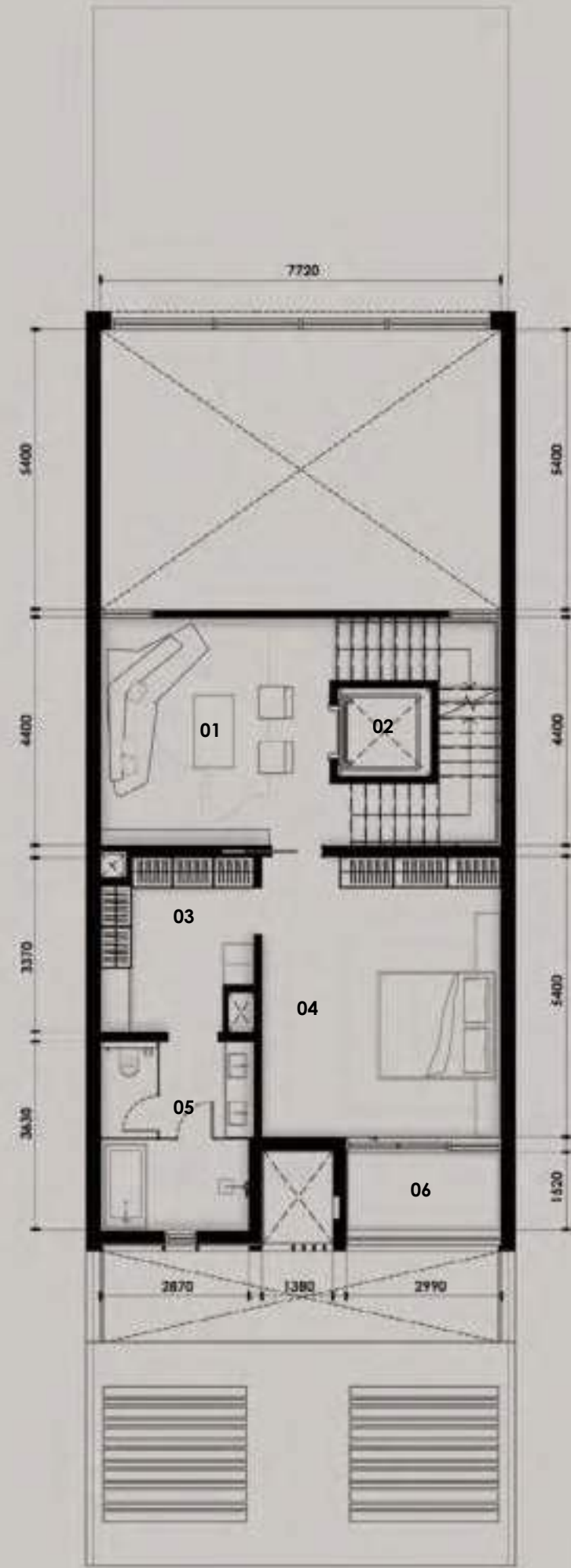
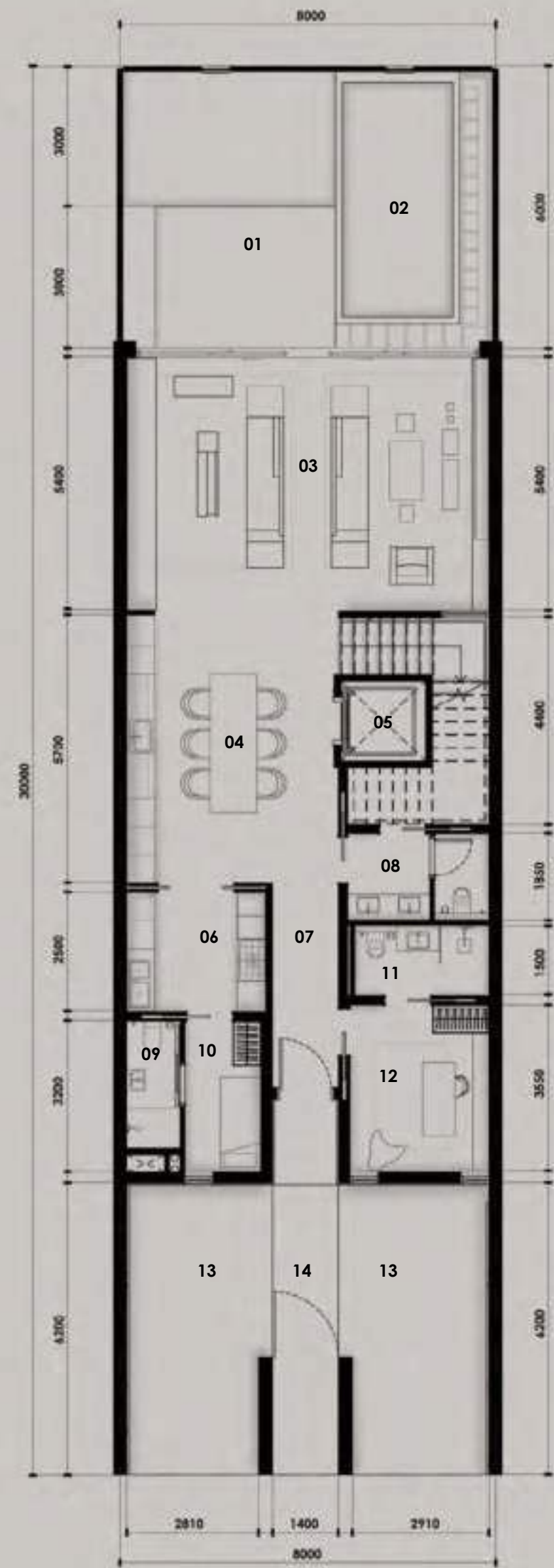
They blend perfectly into the interior, freeing the flow of residents' movement, and elevating their physical and mental well-being.



## THE FLOW OF TEXTURE AND MATERIAL

The project's design began with the selection of textures, glass, travertine, wood and metal. Raw materials are selected to correspond with the flow of energy. Perfect individually, they interplay and exchange energies when placed together.

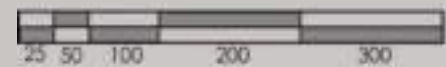




SUPERHOME	BUA (SQ.M)	BUA (SQ.FT)
Plant Room Level	22.40 sq.m	241.11 sq.ft
Ground Floor	178.20 sq.m	1,918.13 sq.ft
First Floor	96.10 sq.m	1,034.41 sq.ft
Second Floor	130.40 sq.m	1,403.61 sq.ft
Roof deck	80.40 sq.m	865.42 sq.ft
<b>Total</b>	<b>507.50 sq.m</b>	<b>5,462.68 sq.ft</b>

PLOT	AREA	240.00 sq.m	2,583.34 sq.ft
Plot No.		42, 43, 44 and 45	
No. of Units	73 REGULAR	10 CORNER	
No. of Levels	GROUND + 2 FLOORS + ROOF		
Height	14.60m ROOF SLAB		



- 01 OUTDOOR YARD

02 POOL

03 ENTERTAINMENT AREA

04 KITCHEN | DINING AREA

05 LIFT

06 MAIN KITCHEN

07 HALLWAY
- 08 WASH AREA

09 MAID'S BATHROOM

10 MAID'S ROOM

11 GUEST BATHROOM

12 GUEST ROOM

13 CAR PORT

14 MAIN ENTRANCE

- 01 MASTER LIVING AREA

02 LIFT

03 WALK-IN-CLOSET

04 MASTER BEDROOM

05 MASTER BATHROOM

06 BALCONY

- 01 BALCONY

02 WALK-IN-CLOSET

03 BEDROOM

04 BATHROOM

05 ENTERTAINMENT AREA

06 LIFT
- 07 BATHROOM

08 BEDROOM | KID'S ROOM

09 WALK-IN-CLOSET

10 BALCONY

11 BALCONY

- 01 OUTDOOR SEATING AREA

02 OUTDOOR GRILL AREA

03 LAUNDRY AREA

04 LIFT

05 MEP SERVICES AREA

## KETURAH RESERVE ROW HOUSE | 4 BEDROOM







Mohammed Bin Rashid City District 7 (MBR7)  
25.2048° N, 55.2708° E



KETURAH RESERVE

BIO LIVING  
DESIGN PROCESS





Mohammed Bin Rashid City District 7 (MBR7)  
25.2048° N, 55.2708° E

KETURAH RESERVE  
BIO LIVING  
DESIGN PROCESS





Mohammed Bin Rashid City District 7 (MBR7)  
25.2048° N, 55.2708° E



KETURAH RESERVE

BIO LIVING  
DESIGN PROCESS





Mohammed Bin Rashid City District 7 (MBR7)  
25.2048° N, 55.2708° E



KETURAH RESERVE

BIO LIVING  
DESIGN PROCESS



All Keturah Reserve homes include two kitchens, a functional and an entertainment kitchen.



Mohammed Bin Rashid City District 7 (MBR7)  
25.2048° N, 55.2708° E



KETURAH RESERVE

BIO LIVING  
DESIGN PROCESS





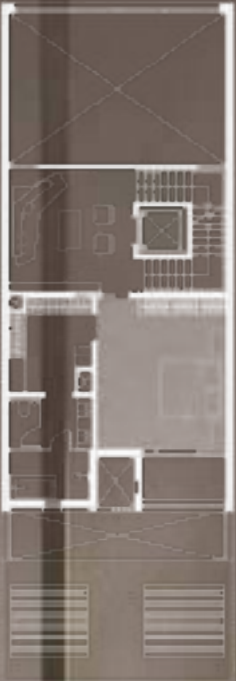




Mohammed Bin Rashid City District 7 (MBR7)  
25.2048° N, 55.2708° E

KETURAH RESERVE

BIO LIVING  
DESIGN PROCESS







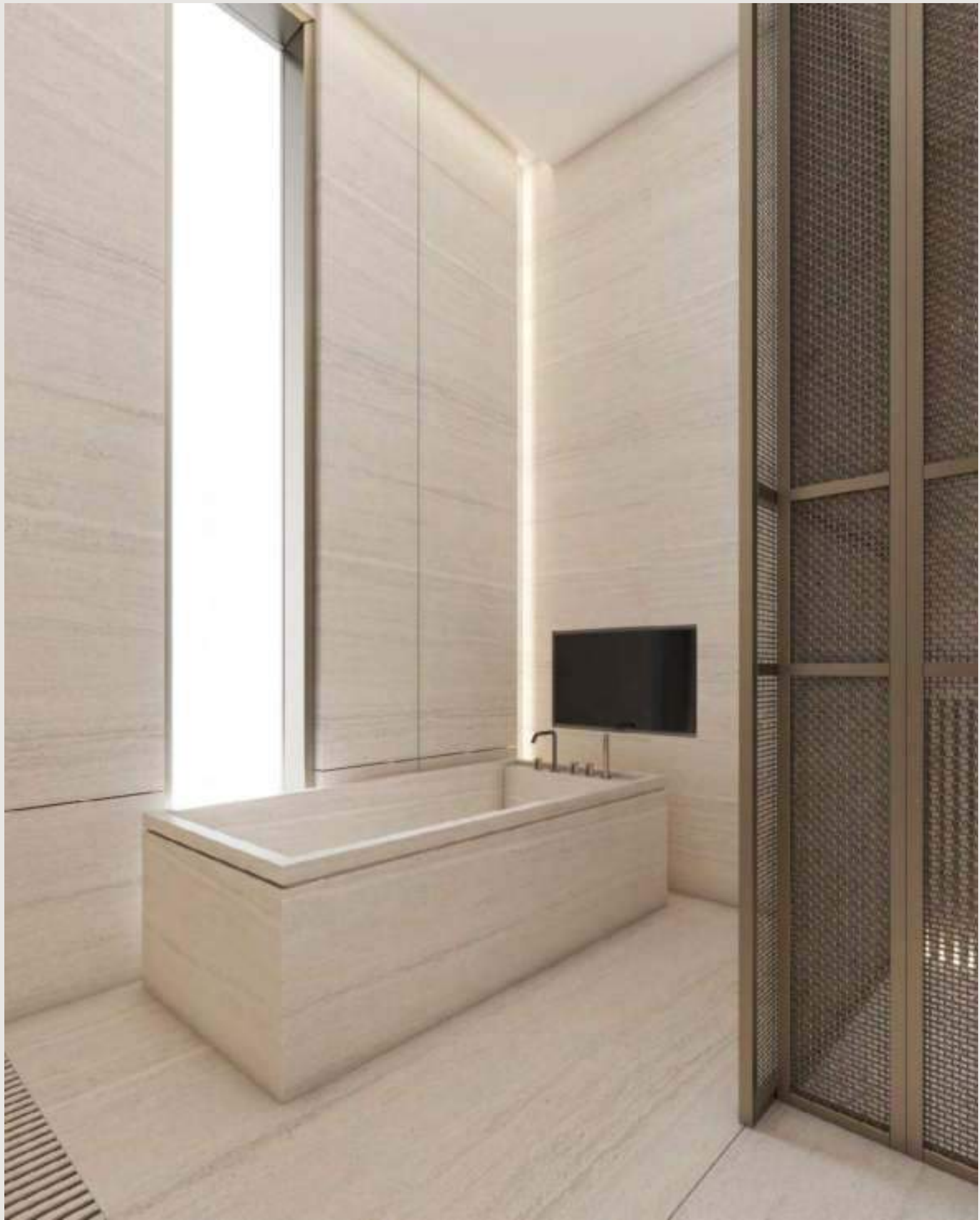


Mohammed Bin Rashid City District 7 (MBR7)  
25.2048° N, 55.2708° E



KETURAH RESERVE

BIO LIVING  
DESIGN PROCESS





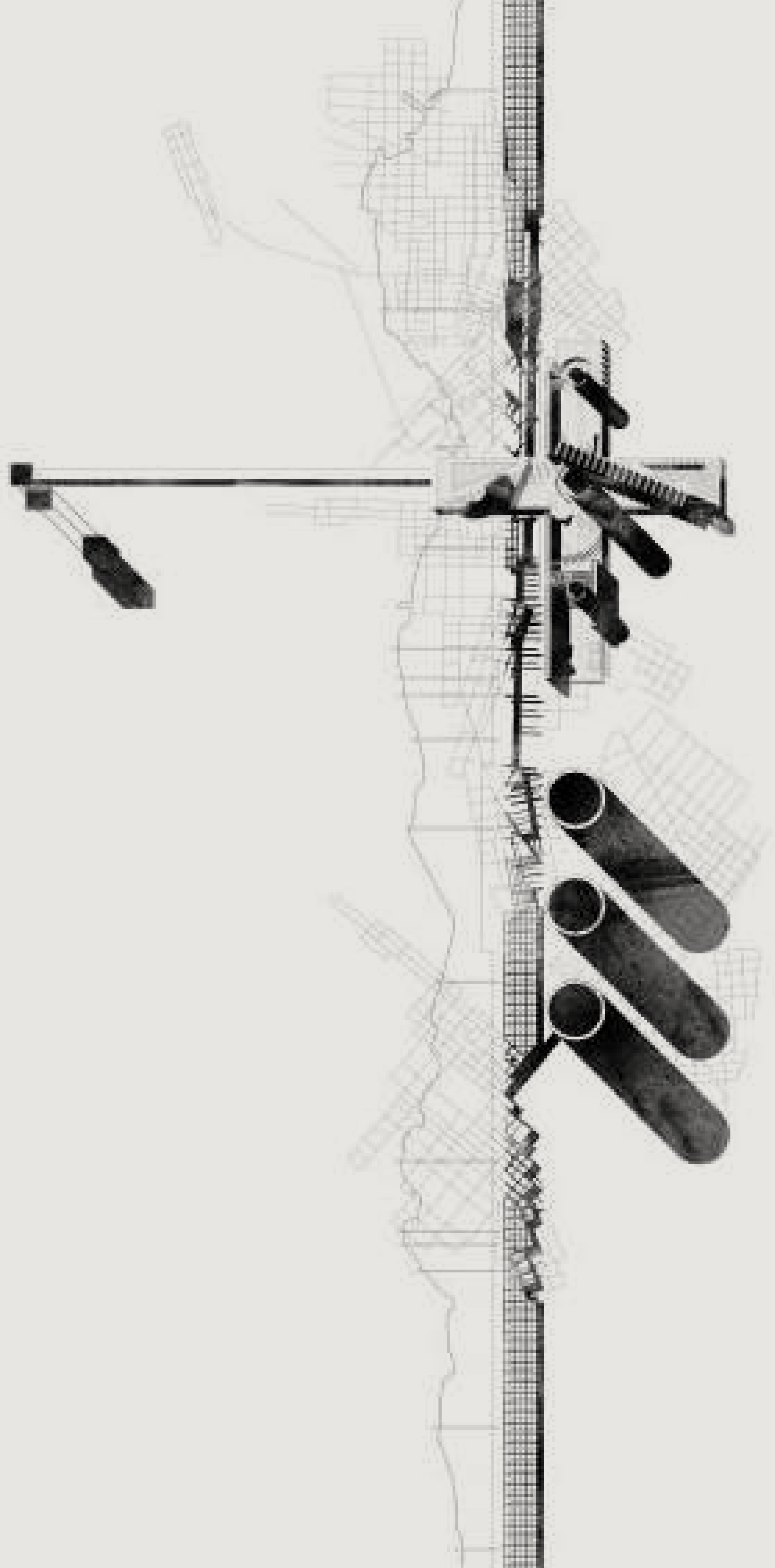
Mohammed Bin Rashid City District 7 (MBR7)  
25.2048° N, 55.2708° E

KETURAH RESERVE

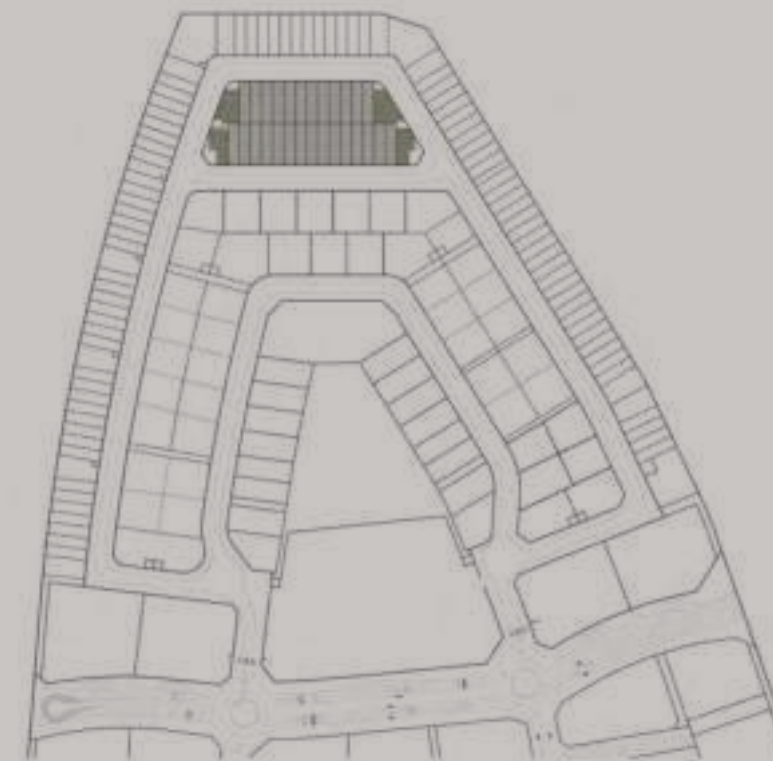
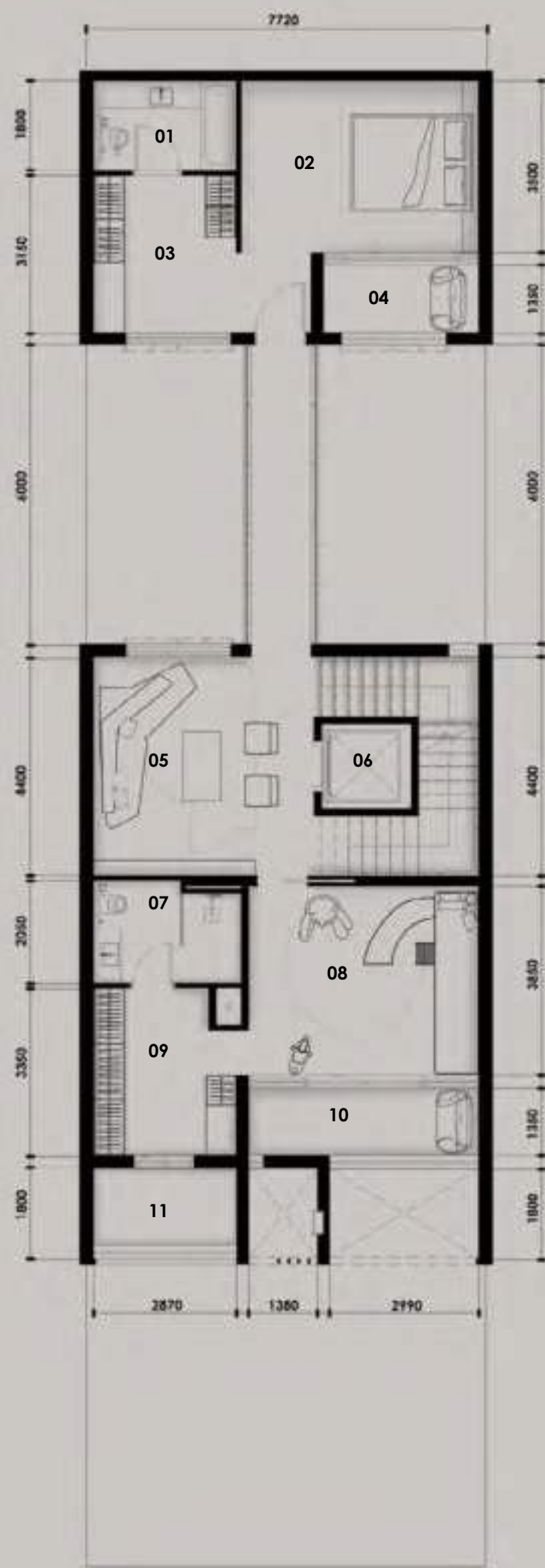
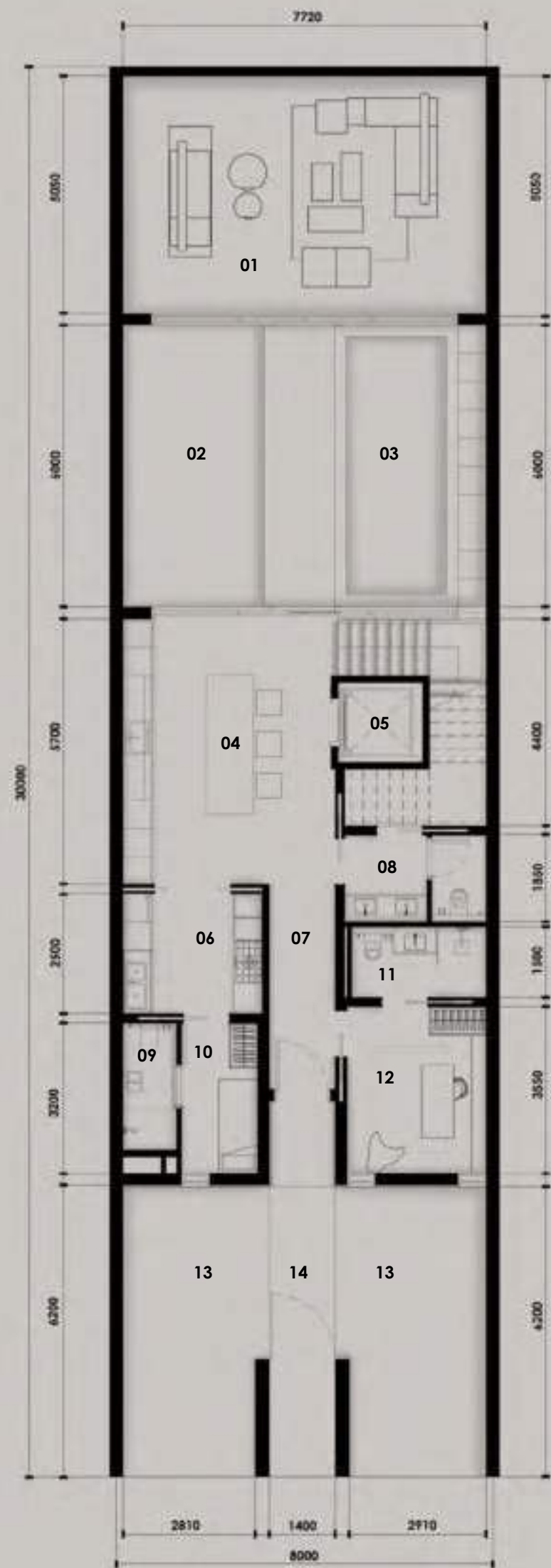
BIO LIVING  
DESIGN PROCESS





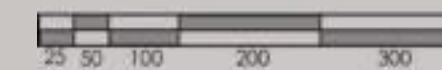






SUPERHOME	BUA (SQ.M)	BUA (SQ.FT)
Plant Room Level	28.80 sq.m	310.00 sq.ft
Ground Floor	185.80 sq.m	1,999.94 sq.ft
First Floor	97.30 sq.m	1,047.33 sq.ft
Second Floor	139.40 sq.m	1,500.48 sq.ft
Roof deck	95.30 sq.m	1,025.80 sq.ft
<b>Total</b>	<b>546.60 sq.m</b>	<b>5,883.55 sq.ft</b>

PLOT		
AREA	240.00 sq.m	2,583.34 sq.ft
Plot No.		46 and 47
No. of Units	27 REGULAR	4 CORNER
No. of Levels	GROUND + 2 FLOORS + ROOF	
Height	14.60M ROOF SLAB	



01 ENTERTAINMENT AREA  
02 OUTDOOR YARD  
03 POOL  
04 KITCHEN | DINING AREA  
05 LIFT  
06 MAIN KITCHEN  
07 HALLWAY

08 WASH AREA  
09 MAID'S BATHROOM  
10 MAID'S ROOM  
11 GUEST BATHROOM  
12 GUEST ROOM  
13 CAR PORT  
14 MAIN ENTRANCE

01 MASTER LIVING AREA  
02 LIFT  
03 WALK-IN-CLOSET  
04 MASTER BEDROOM  
05 MASTER BATHROOM  
06 BALCONY

01 BATHROOM  
02 BEDROOM  
03 WALK-IN-CLOSET  
04 BALCONY  
05 ENTERTAINMENT AREA  
06 LIFT  
07 BATHROOM  
08 BEDROOM | KID'S ROOM  
09 WALK-IN-CLOSET  
10 BALCONY  
11 BALCONY

01 MEP SERVICES AREA  
02 OUTDOOR GRILL AREA  
03 LAUNDRY AREA  
04 LIFT  
05 OUTDOOR SEATING AREA

## KETURAH RESERVE BACK-TO-BACK | 4 BEDROOM

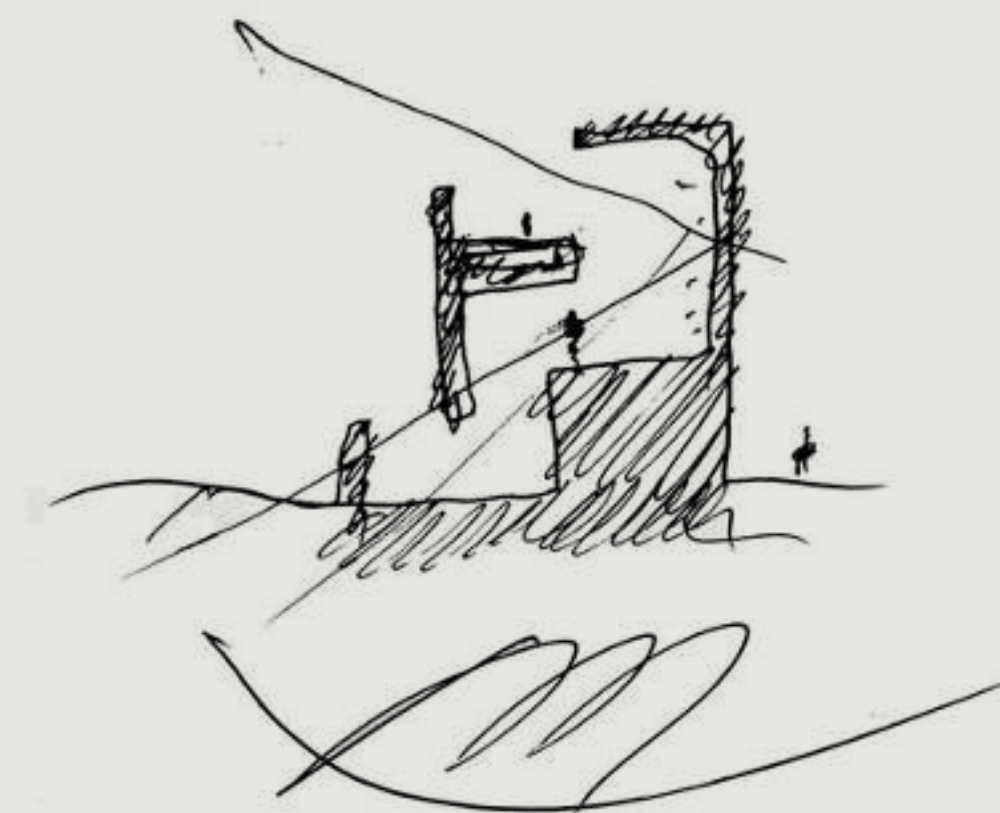














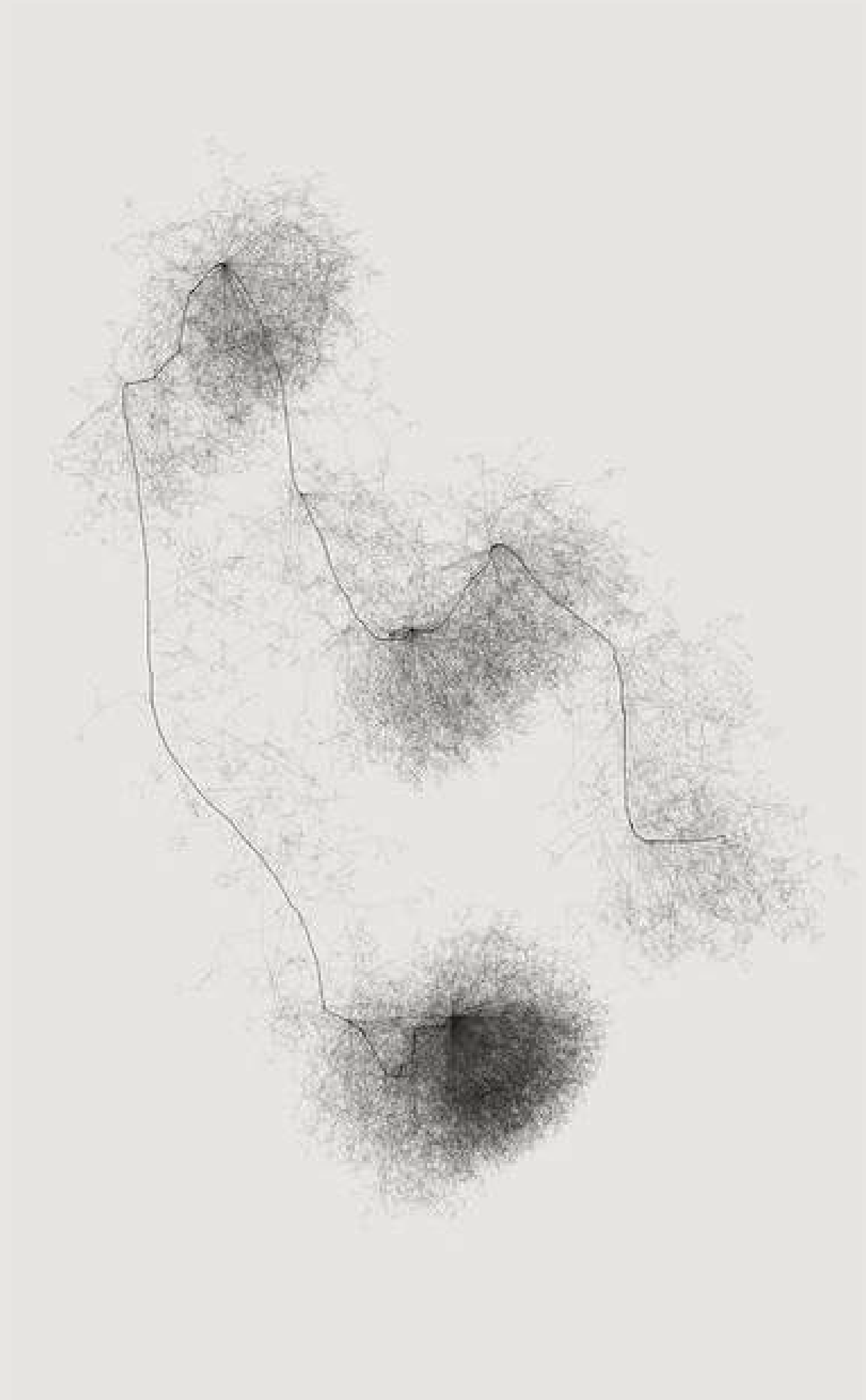
Mohammed Bin Rashid City District 7 (MBR7)  
25.2048° N, 55.2708° E

KETURAH RESERVE

BIO LIVING  
DESIGN PROCESS









Mohammed Bin Rashid City District 7 (MBR7)  
25.2048° N, 55.2708° E



KETURAH RESERVE

BIO LIVING  
DESIGN PROCESS





Mohammed Bin Rashid City District 7 (MBR7)  
25.2048° N, 55.2708° E

KETURAH RESERVE

BIO LIVING  
DESIGN PROCESS



Keturah Reserve is uniquely designed from the inside out,  
from the central beating heart to the exterior,  
the architectural skin.





Mohammed Bin Rashid City District 7 (MBR7)  
25.2048° N, 55.2708° E

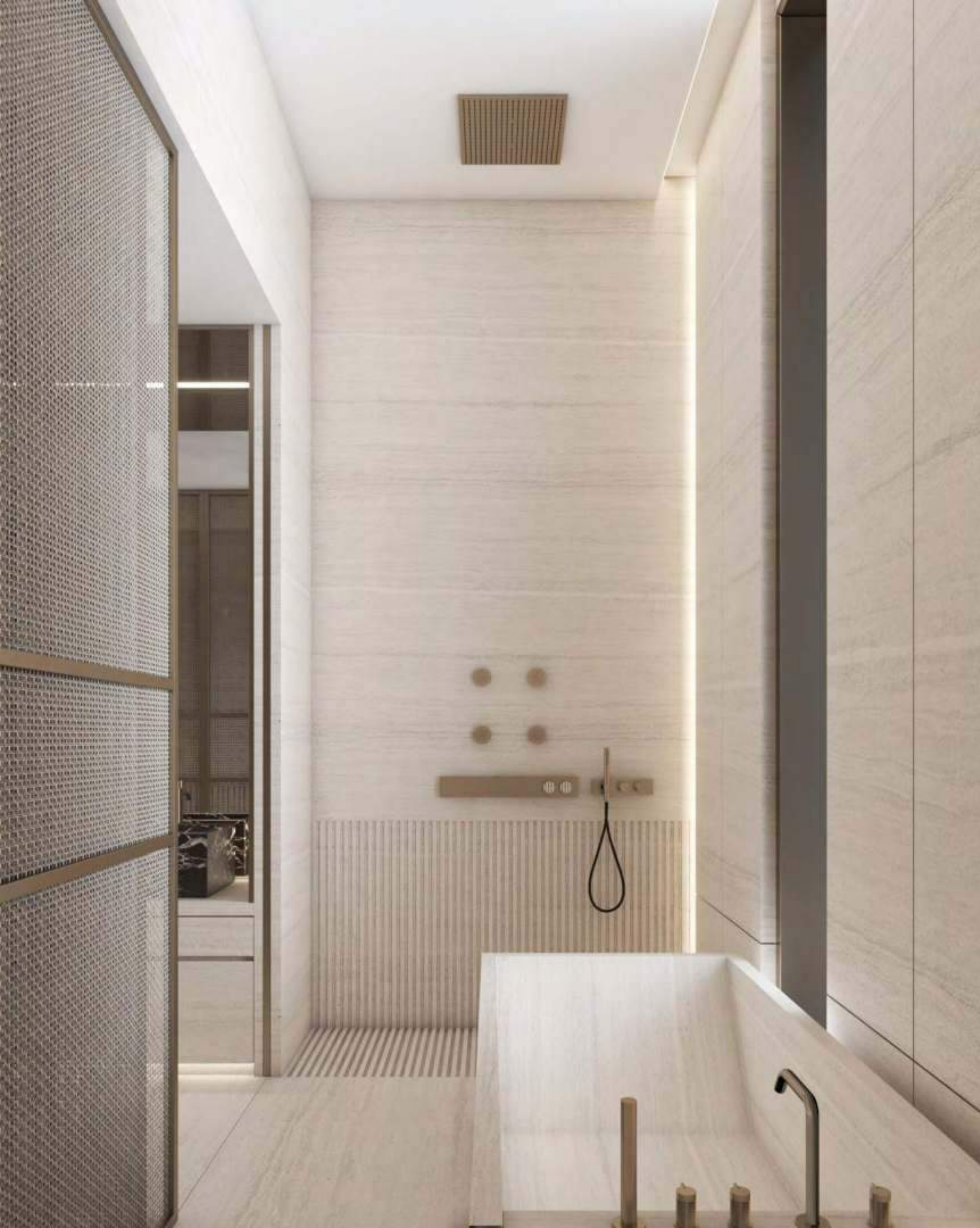


KETURAH RESERVE

BIO LIVING  
DESIGN PROCESS









Mohammed Bin Rashid City District 7 (MBR7)  
25.2048° N, 55.2708° E

ĶETURAH RESERVE  
BIO LIVING  
DESIGN PROCESS



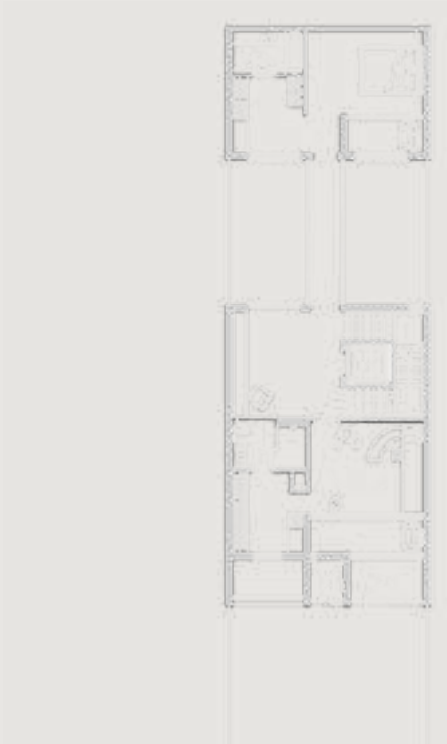


Mohammed Bin Rashid City District 7 (MBR7)  
25.2048° N, 55.2708° E

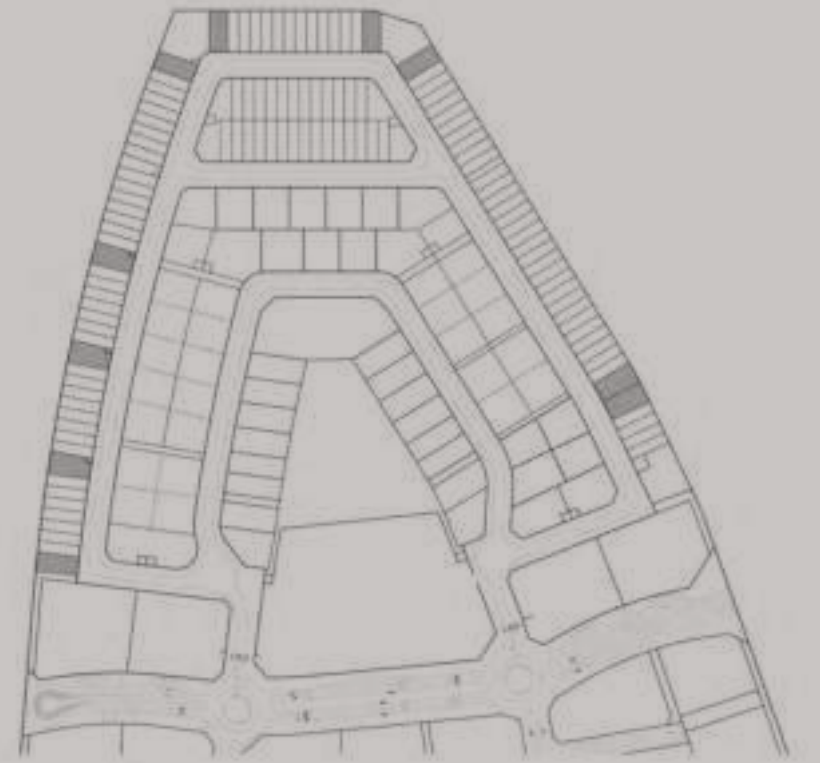
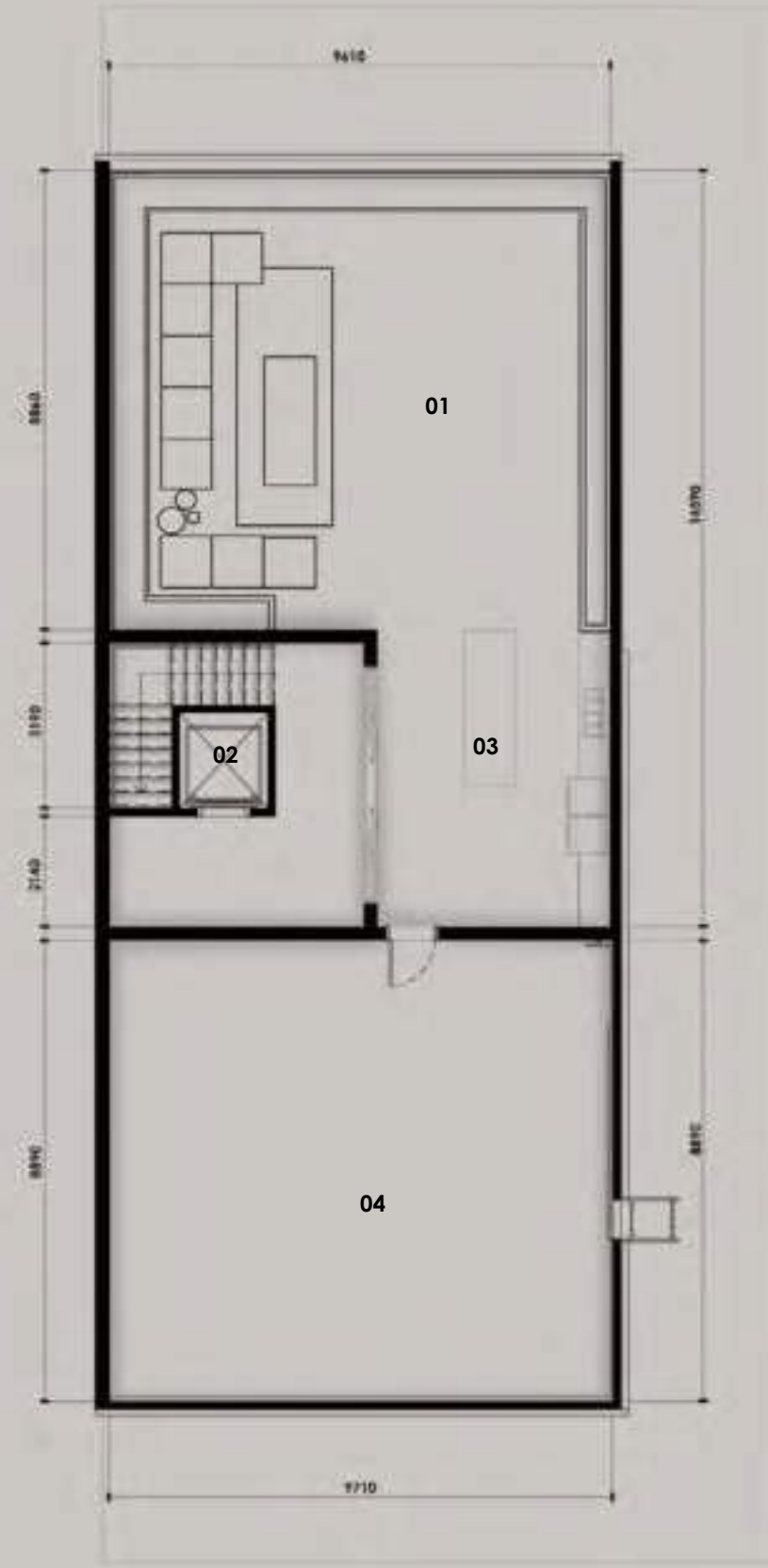
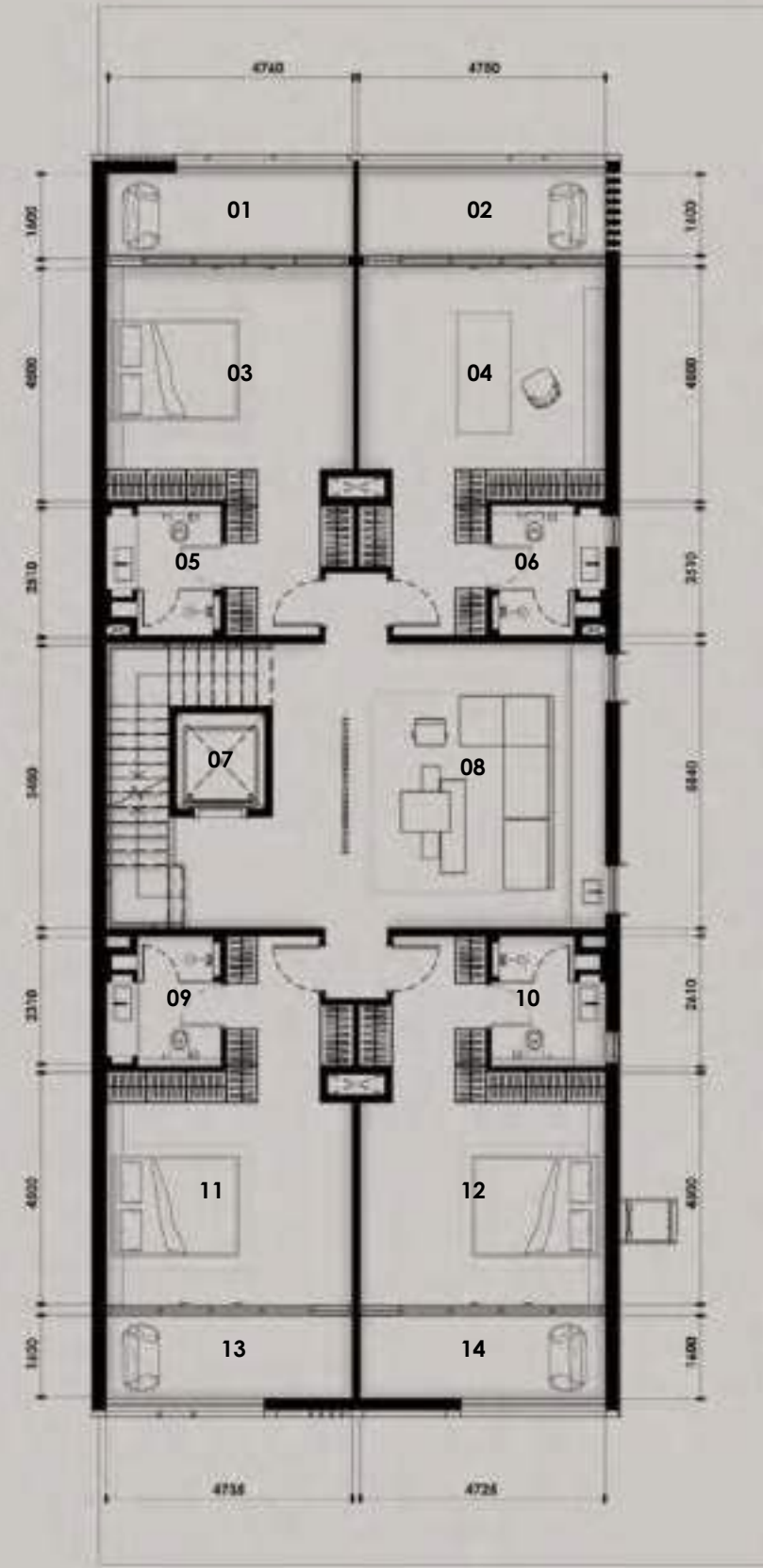
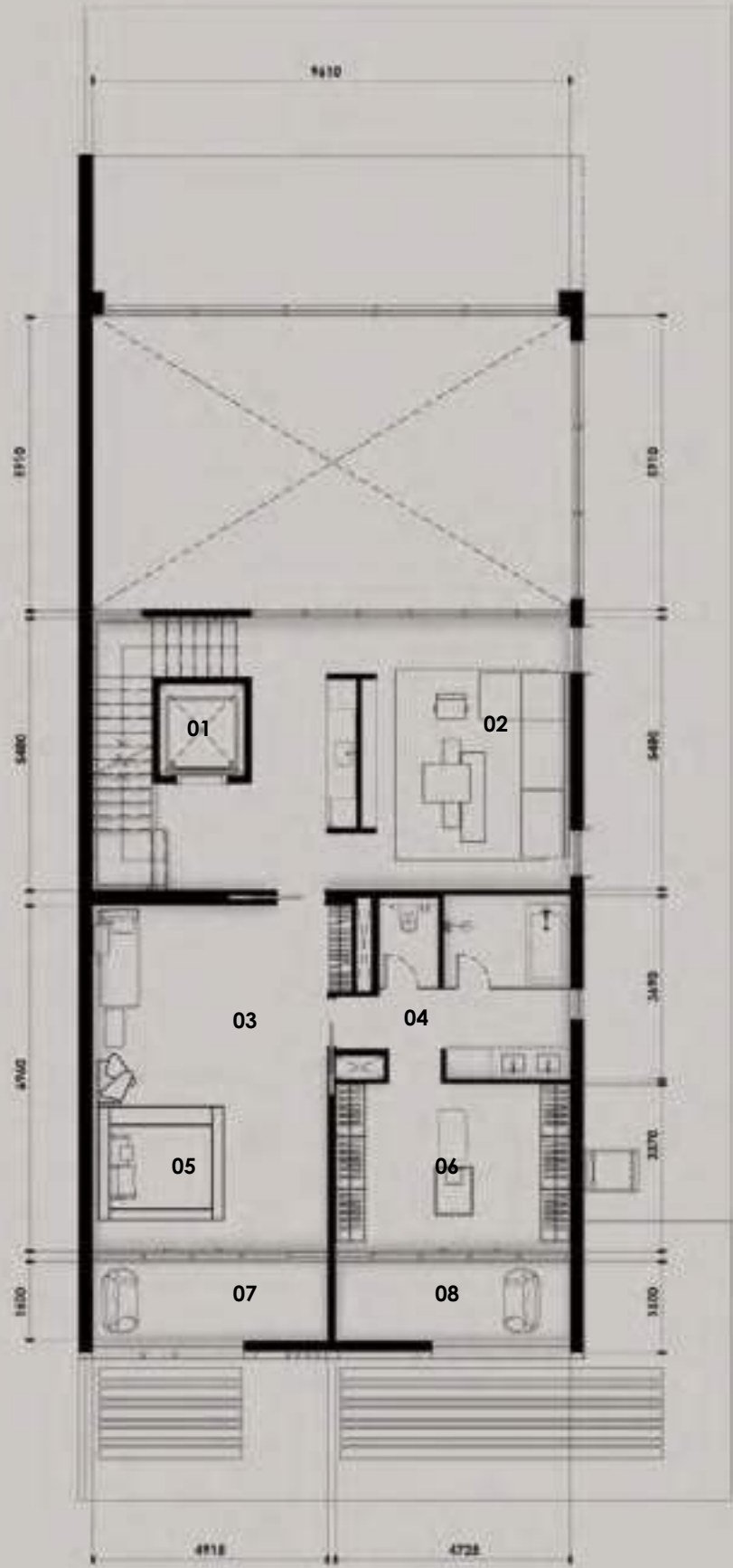
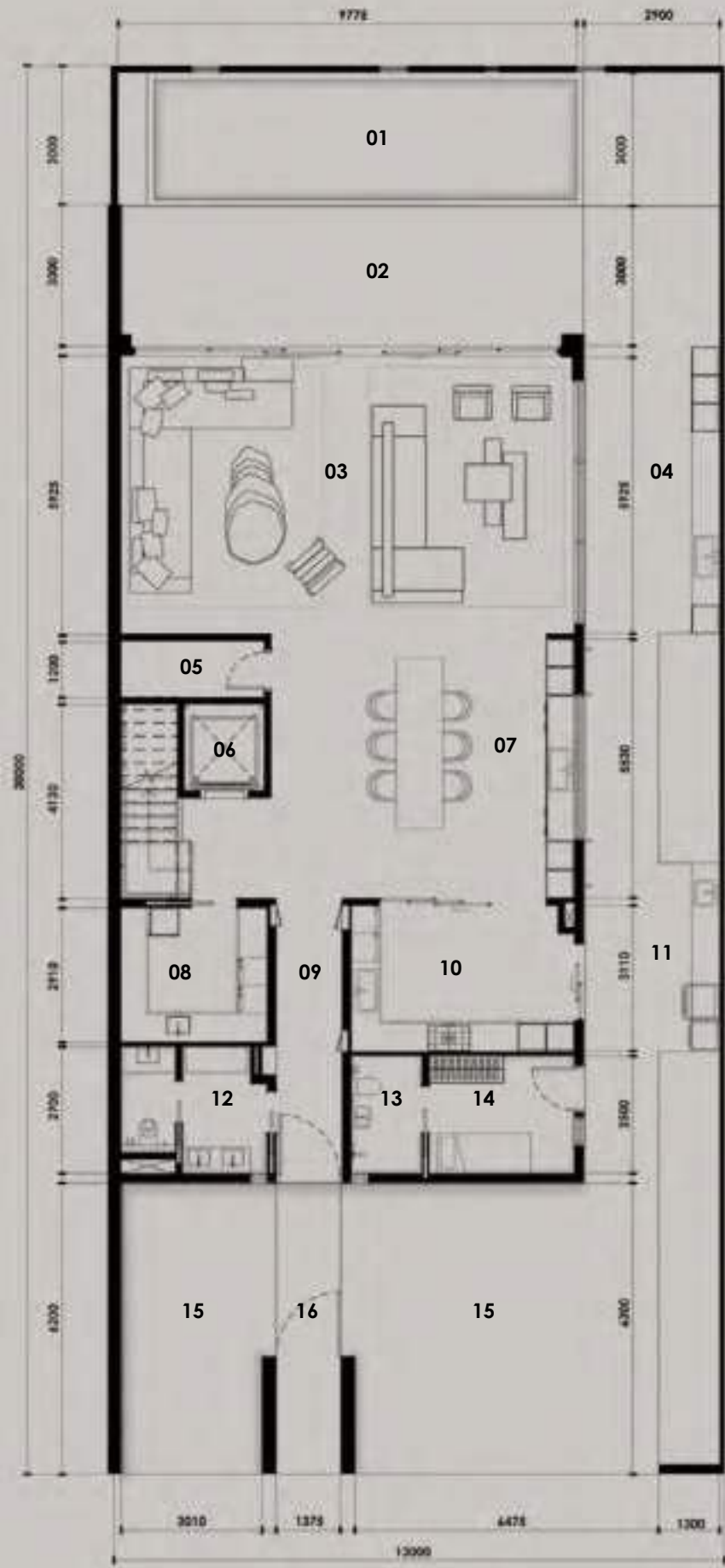


KETURAH RESERVE

BIO LIVING  
DESIGN PROCESS

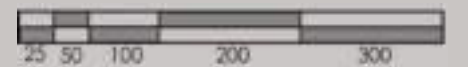






SUPERHOME	BUA (SQ.M)	BUA (SQ.FT)
Plant Room Level	31.30 sq.m	336.91 sq.ft
Ground Floor	287.70 sq.m	3,096.77 sq.ft
First Floor	180.60 sq.m	1,943.96 sq.ft
Second Floor	236.50 sq.m	2,545.67 sq.ft
Roof deck	147.40 sq.m	1,586.60 sq.ft
<b>Total</b>	<b>883.50 sq.m</b>	<b>9,509.91 sq.ft</b>

PLOT		
AREA	390.00 sq.m	4,197.92 sq.ft
Plot No.		42, 43, 44 and 45
No. of Units		10 REGULAR
No. of Levels		GROUND + 2 FLOORS + ROOF
Height		14.60m ROOF SLAB



- 01 POOL

02 OUTDOOR TERRACE

03 ENTERTAINMENT AREA

04 OUTDOOR BAR

05 STORAGE

06 LIFT

07 KITCHEN | DINING AREA

08 LAUNDRY ROOM
- 09 HALLWAY

10 SERVICE KITCHEN

11 OUTDOOR GRILL AREA

12 WASH AREA

13 MAID'S BATHROOM

14 MAID'S ROOM

15 CARPORT

16 MAIN ENTRANCE

- 01 LIFT

02 MASTER LIVING AREA

03 MASTER SEATING AREA

04 MASTER BATHROOM

05 MASTER BEDROOM

06 WALK-IN-CLOSET

07 BALCONY

08 BALCONY

- 01 BALCONY 1

02 BALCONY 2

03 BEDROOM 1

04 BEDROOM 2

05 BATHROOM 1

06 BATHROOM 2

07 LIFT
- 08 ENTERTAINMENT AREA

09 BATHROOM 3

10 BATHROOM 4

11 BEDROOM 3

12 BEDROOM 4

13 BALCONY 3

14 BALCONY 4

- 01 OUTDOOR SEATING AREA

02 LIFT

03 OUTDOOR GRILL AREA

04 MEP SERVICES AREA

KETURAH RESERVE

ROW HOUSE | 5 BEDROOM







Mohammed Bin Rashid City District 7 (MBR7)  
25.2048° N, 55.2708° E



KETURAH RESERVE

BIO LIVING  
DESIGN PROCESS



Mohammed Bin Rashid City District 7 (MBR7)  
25.2048° N, 55.2708° E



KETURAH RESERVE

BIO LIVING  
DESIGN PROCESS





Mohammed Bin Rashid City District 7 (MBR7)  
25.2048° N, 55.2708° E



KETURAH RESERVE

BIO LIVING  
DESIGN PROCESS





Mohammed Bin Rashid City District 7 (MBR7)  
25.2048° N, 55.2708° E



KETURAH RESERVE

BIO LIVING  
DESIGN PROCESS



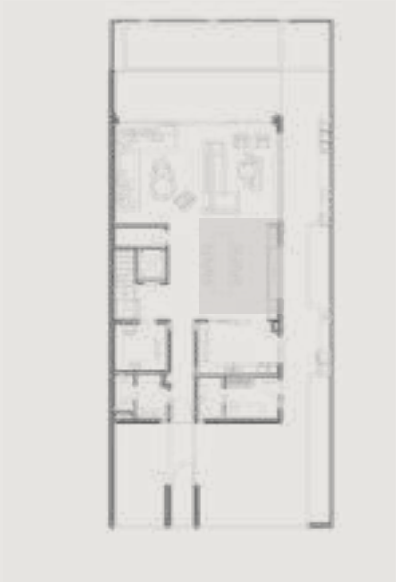


Mohammed Bin Rashid City District 7 (MBR7)  
25.2048° N, 55.2708° E



KETURAH RESERVE

BIO LIVING  
DESIGN PROCESS



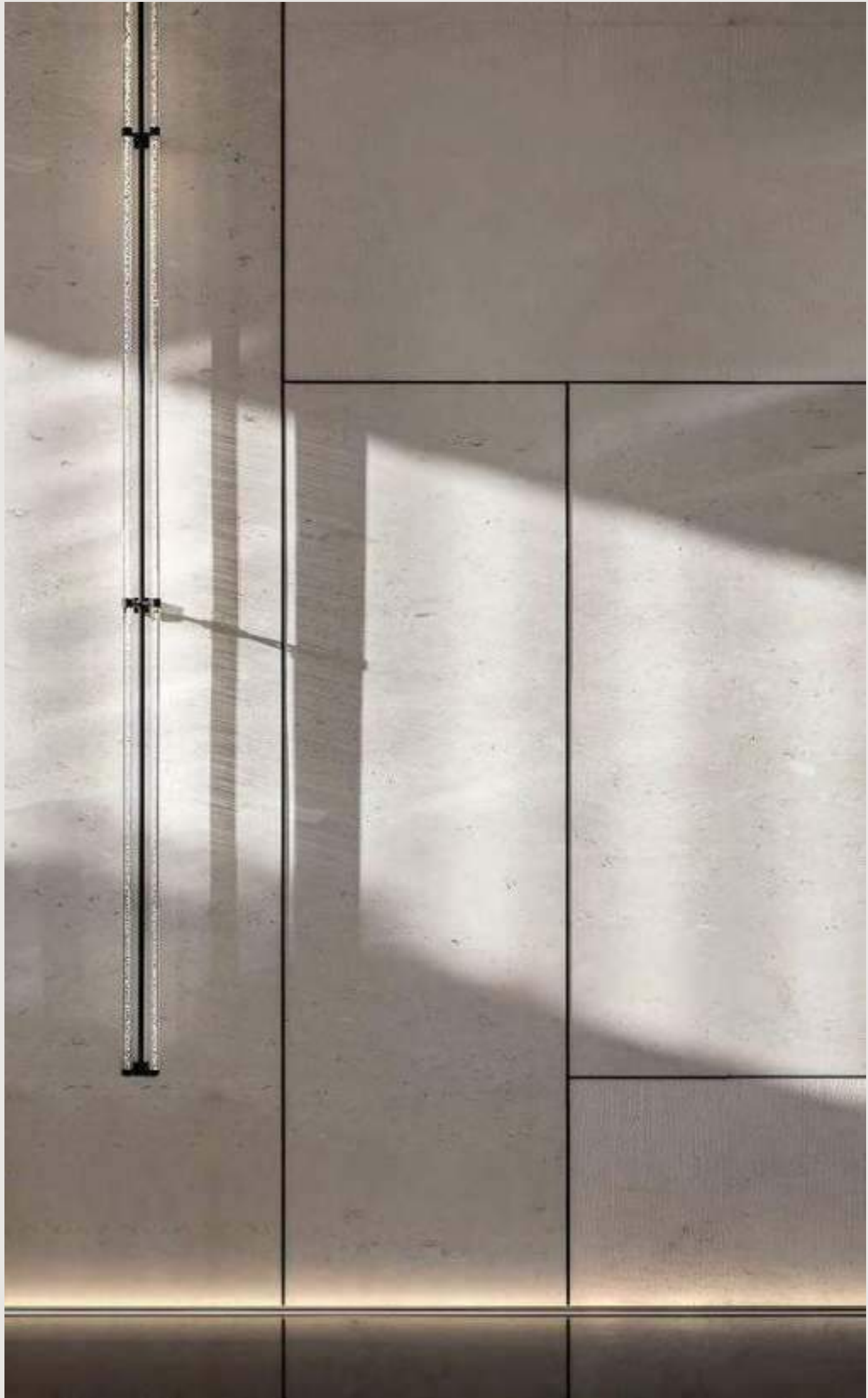


Mohammed Bin Rashid City District 7 (MBR7)  
25.2048° N, 55.2708° E



KETURAH RESERVE

BIO LIVING  
DESIGN PROCESS





Mohammed Bin Rashid City District 7 (MBR7)  
25.2048° N, 55.2708° E



KETURAH RESERVE

BIO LIVING  
DESIGN PROCESS





Mohammed Bin Rashid City District 7 (MBR7)  
25.2048° N, 55.2708° E



KETURAH RESERVE

BIO LIVING  
DESIGN PROCESS





Mohammed Bin Rashid City District 7 (MBR7)  
25.2048° N, 55.2708° E



KETURAH RESERVE

BIO LIVING  
DESIGN PROCESS





Mohammed Bin Rashid City District 7 (MBR7)  
25.2048° N, 55.2708° E



KETURAH RESERVE

BIO LIVING  
DESIGN PROCESS



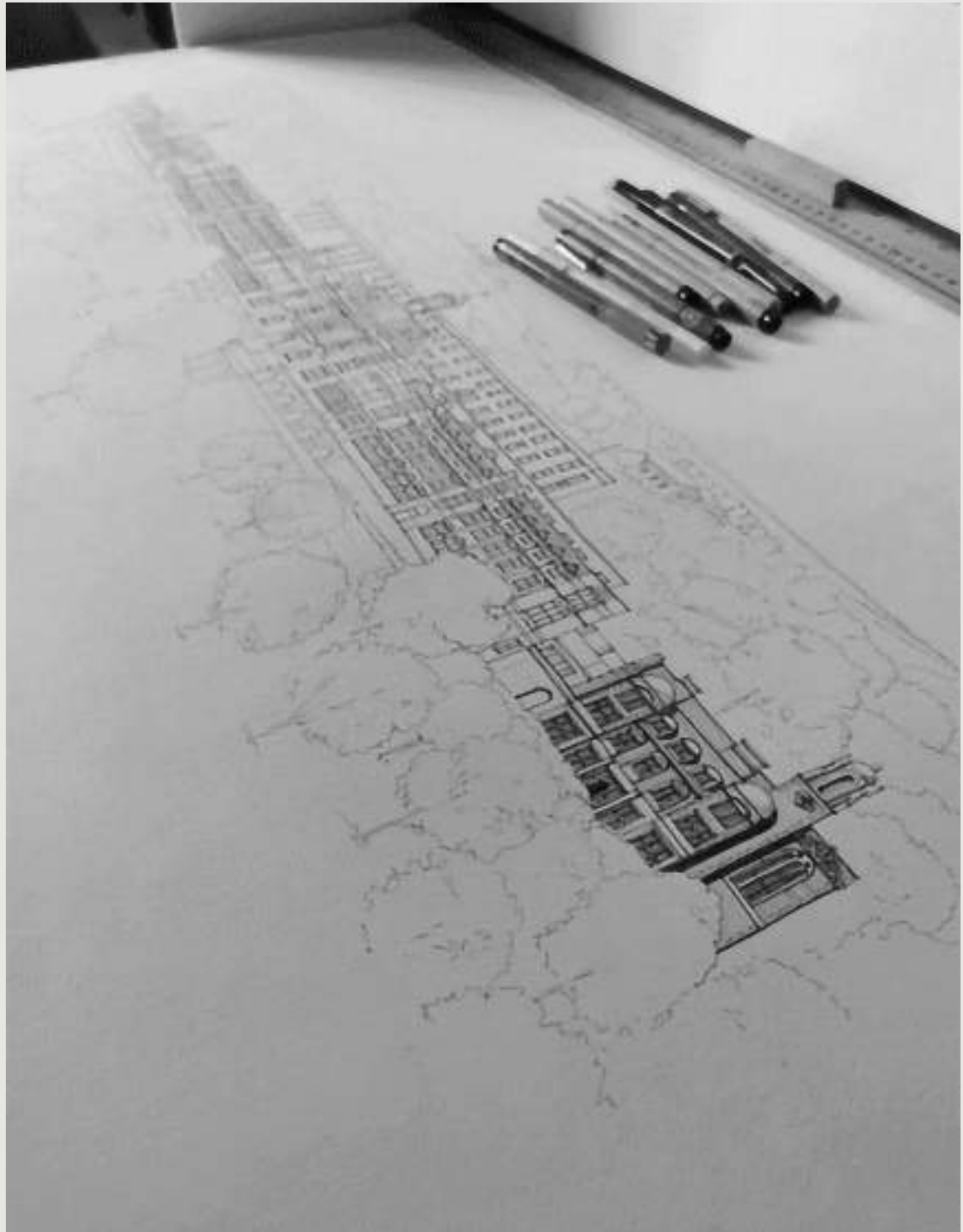


Mohammed Bin Rashid City District 7 (MBR7)  
25.2048° N, 55.2708° E



KETURAH RESERVE

BIO LIVING  
DESIGN PROCESS



Each Keturah Reserve home features a home office,  
which may also be converted into a bedroom.



INTERIOR BODY

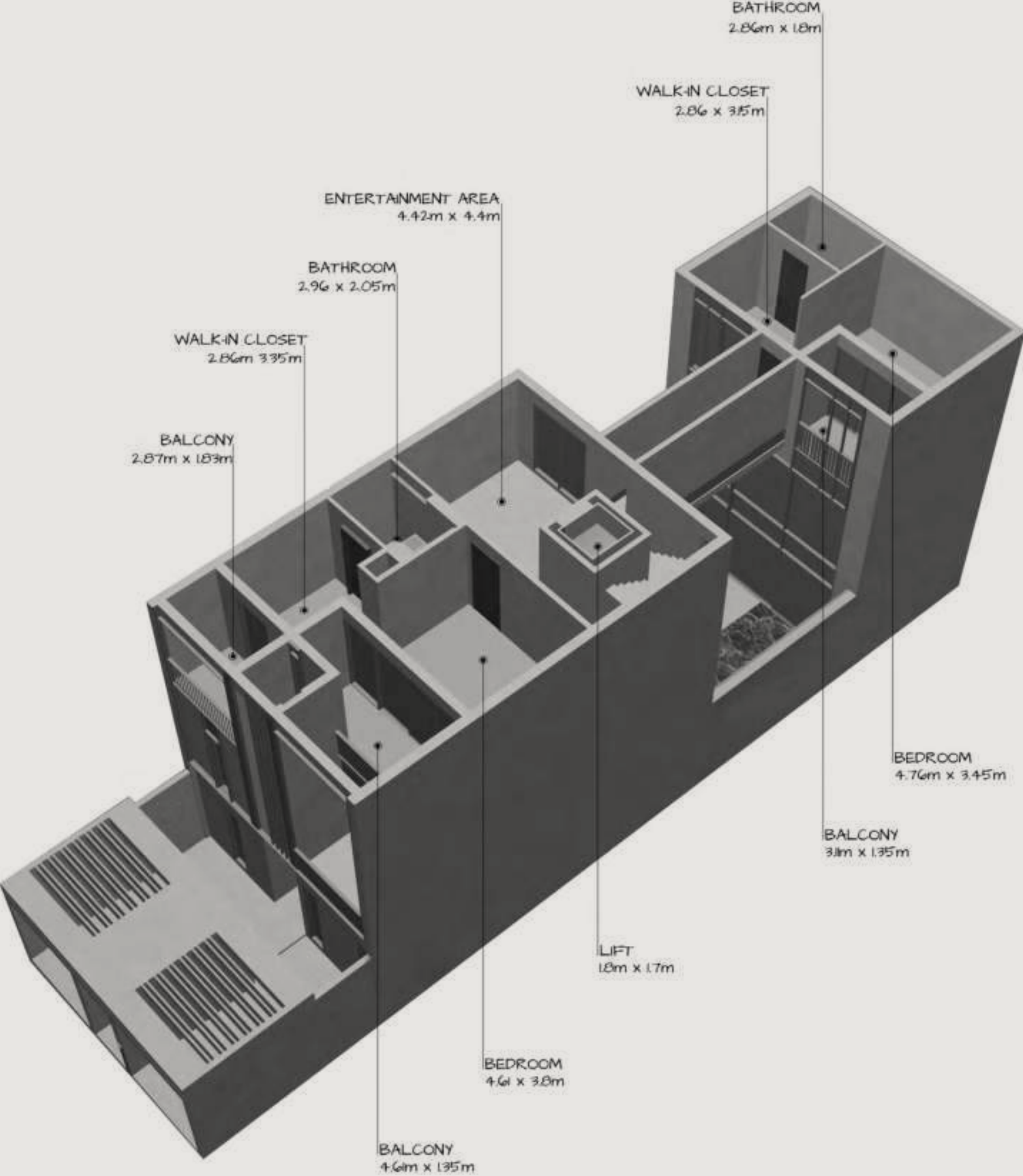
Keturah Reserve is uniquely designed from the inside out, from the central beating heart to the exterior, the architectural skin.

ARCHITECTURE SKIN

The clean, geometric lines of the façade connect the interior to the exterior.

LANDSCAPE

The homes blend into the rawness of the desert landscape with its indigenous plants and olive trees.







FRAMELESS SLIDING DOOR



WHITE TRAVERTINE TILES

The travertine façade links the outside to the inside, with the vertical metal slats creating a play of shadow and intimacy.



HAIRLINE CHAMPAGNE METAL



WOODEN FLOOR



# Quooker®

Hot, cold, chilled and sparking filtered water from a single tap.



# TOTO

Award-winning innovative sanitary ceramic bathroom suites from Japan.



# Miele

German engineered state-of-the-art kitchen appliances. Revolutionary Technology.



# dyson

Cordless vacuum cleaner for optimum home hygiene.

